

## **Tree Preservation Order**

### **Town and Country Planning Act 1990**

#### **The Tree Preservation Order No 419A (2018)**

#### **Land at Platts Lane, Oughtibridge, Sheffield S35 0HP**

The Sheffield City Council, in exercise of the powers conferred on them by section 198 of the Town and Country Planning Act 1990 make the following Order—

#### **Citation**

1. This Order may be cited as Tree Preservation Order No 419A (2018) – Land at Platts Lane, Oughtibridge, Sheffield S35 0HP

#### **Interpretation**

2. (1) In this Order “the authority” means the Sheffield City Council.  
(2) In this Order any reference to a numbered section is a reference to the section so numbered in the Town and Country Planning Act 1990 and any reference to a numbered regulation is a reference to the regulation so numbered in the Town and Country Planning (Tree Preservation)(England) Regulations 2012.

#### **Effect**

3. (1) Subject to article 4, this Order takes effect provisionally on the date on which it is made.  
(2) Without prejudice to subsection (7) of section 198 (power to make tree preservation orders) or subsection (1) of section 200 (tree preservation orders: Forestry Commissioners) and, subject to the exceptions in regulation 14, no person shall—  
(aa) cut down, top, lop, uproot, wilfully damage, or wilfully destroy; or  
(bb) cause or permit the cutting down, topping, lopping, uprooting, wilful damage or wilful destruction of,  
any tree specified in the Schedule to this Order except with the written consent of the authority in accordance with regulations 16 and 17, or of the Secretary of State in accordance with regulation 23, and, where such consent is given subject to conditions, in accordance with those conditions.

#### **Application to trees to be planted pursuant to a condition**

4. In relation to any tree identified in the first column of the Schedule by the letter “C”, being a tree to be planted pursuant to a condition imposed under paragraph (a) of section 197 (planning permission to include appropriate provision for preservation and planting of trees), this Order takes effect as from the time when the tree is planted.

Dated this 14<sup>th</sup> June 2018

EXECUTED AS A DEED )  
By Sheffield City Council )  
whose common seal was )  
hereunto affixed in the presence of )

  
Duty Authorised Signatory



## SCHEDULE

### Specification of trees

#### Trees specified individually

(encircled in black on the map)

<i>Reference on map</i>	<i>Description</i>	<i>Situation</i>
-------------------------	--------------------	------------------

#### Trees specified by reference to an area

(within a dotted black line on the map)

<i>Reference on map</i>	<i>Description</i>	<i>Situation</i>
-------------------------	--------------------	------------------

A1	Trees of whatever species contained therein	OS Grid Ref: SK 3132 9356
----	---	------------------------------

### Groups of trees

(encircled in green on the map)

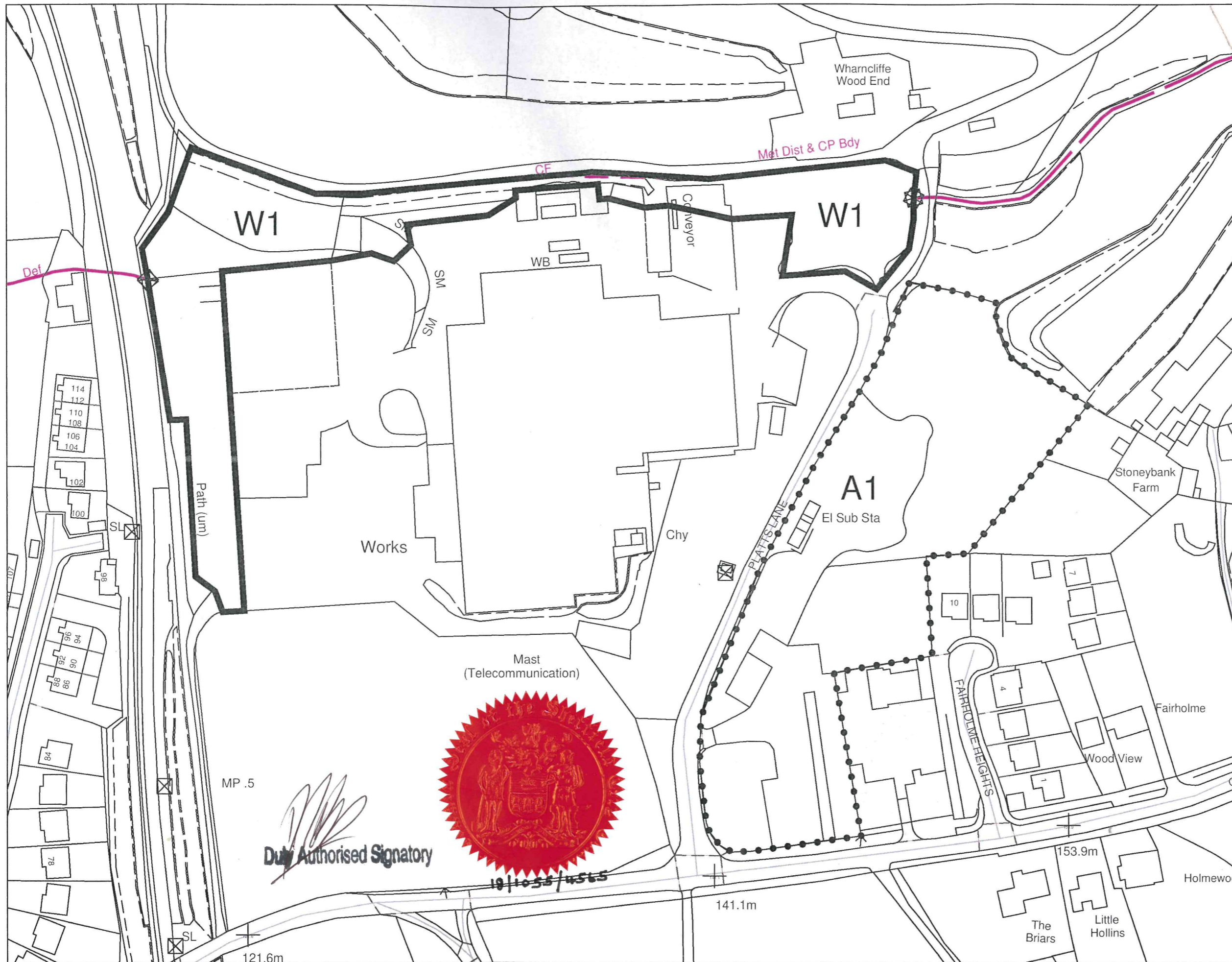
<i>Reference on map</i>	<i>Description (including number of trees of each species in the group)</i>	<i>Situation</i>
-------------------------	---	------------------

### Woodlands

(within a continuous black line on the map)

<i>Reference on map</i>	<i>Description</i>	<i>Situation</i>
-------------------------	--------------------	------------------

W1	Trees of whatever species contained therein	OS Grid Ref: SK 3132 9356
----	---	------------------------------



**Copyright:**  
The use of this data acts as agreement to the following statements:  
© Copyright Sheffield City Council, All rights reserved in Chapter IV of the Copyright, Designs and Patents Act 1988 have been generally asserted.  
© Crown copyright and database rights 2018 OS licence number 100018816. You are granted a non-exclusive, royalty free, revocable licence solely to view the Licensed Data for non-commercial purposes for the period during which Sheffield City Council makes it available. You are not permitted to copy, sub-licence, distribute, sell or otherwise make available the Licensed Data to third parties in any form. Third party rights to enforce the terms of this licence shall be reserved to OS.

**Trees specified individually.**  
(Encircled in black on the plan)  
No on map Description

NONE

**Trees specified by reference to an area**  
(Within a dotted black line on the plan)  
No on map Description

A1 Trees of whatever species contained therein

**Trees specified by reference to a group**  
(Within a broken line on the plan)  
No on map Description

NONE

**Trees specified by reference to a woodland**  
(Within a continuous line on the plan)  
No on map Description

W1 Trees of whatever species contained therein

NONE

O.S. REFERENCE No.: SK 3132 9356

SHEFFIELD CITY COUNCIL			
URBAN AND ENVIRONMENTAL DESIGN TEAM			
SCHEME:			
TREE PRESERVATION ORDER			
No. 808/419			
TITLE:			
Site of Intermet Refractory Products Ltd			
PLATTS LANE, OUGHTIBRIDGE			
SCALE:		1:1250	
PAPER SIZE:		A3	
Project:	Drawn by:	Checked by:	Date:
	IPS		24 May 2018
Drawing No:			
A3/UED/808/419			
Status:	Suitable for		
Revision:			