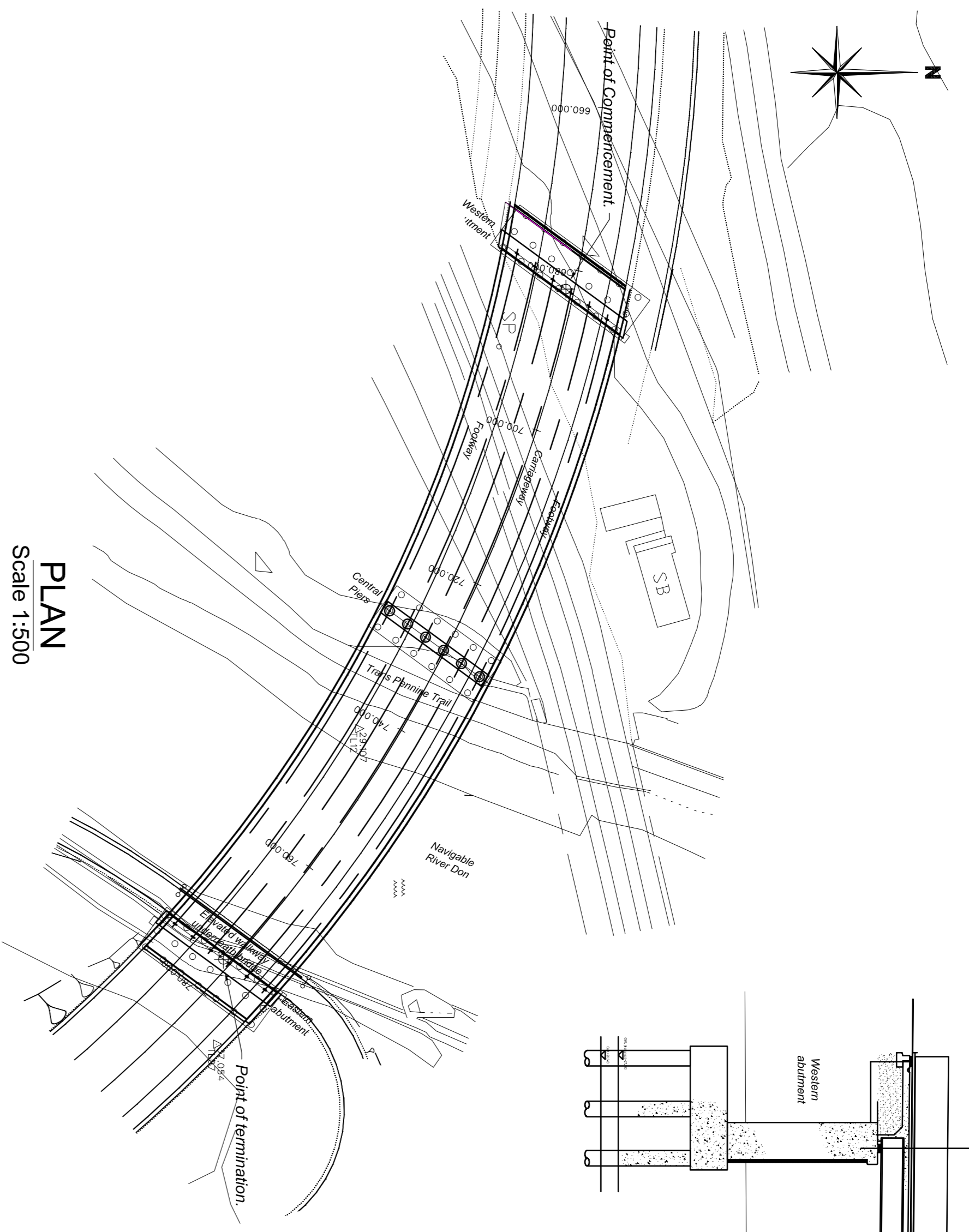
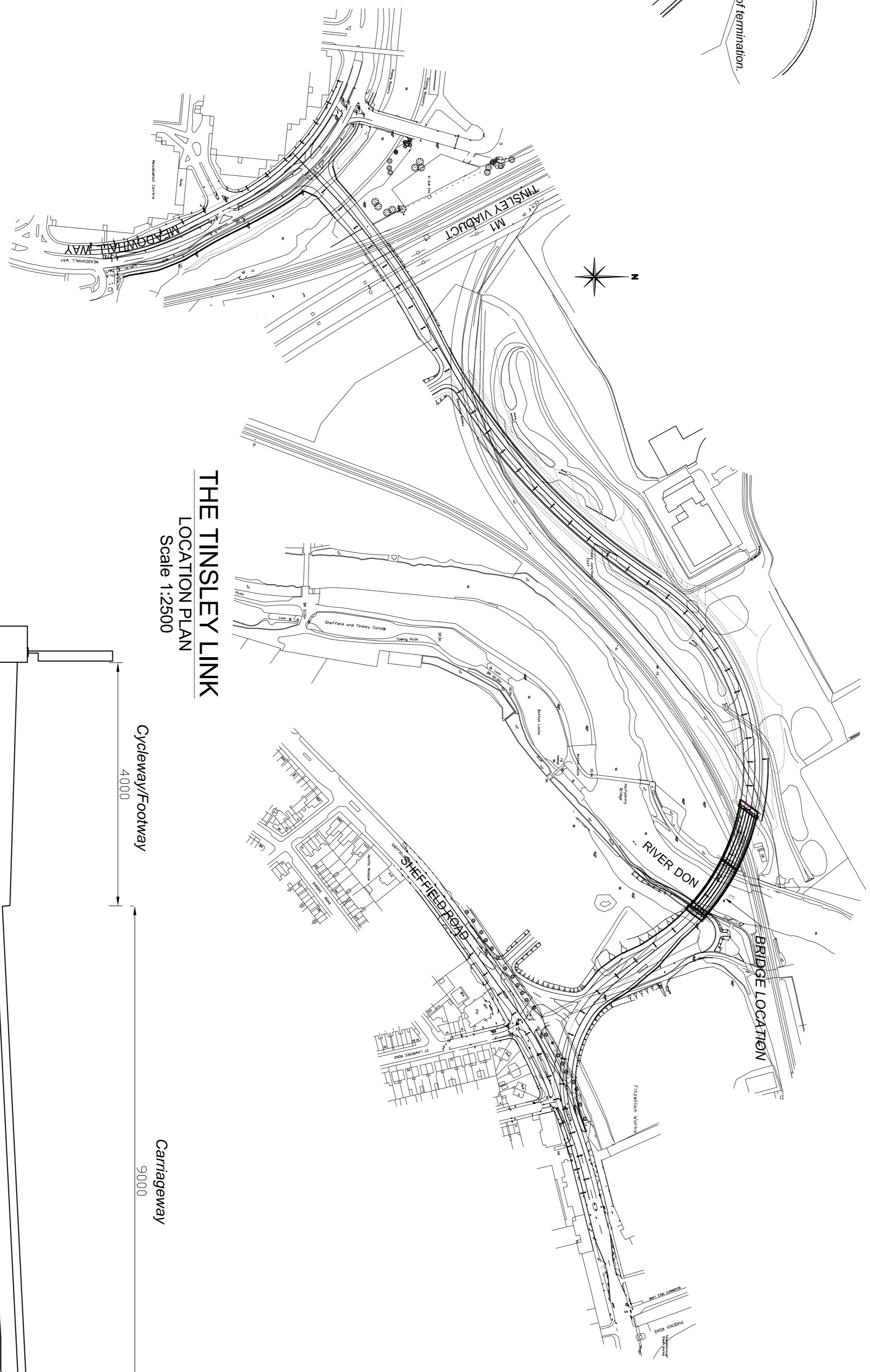


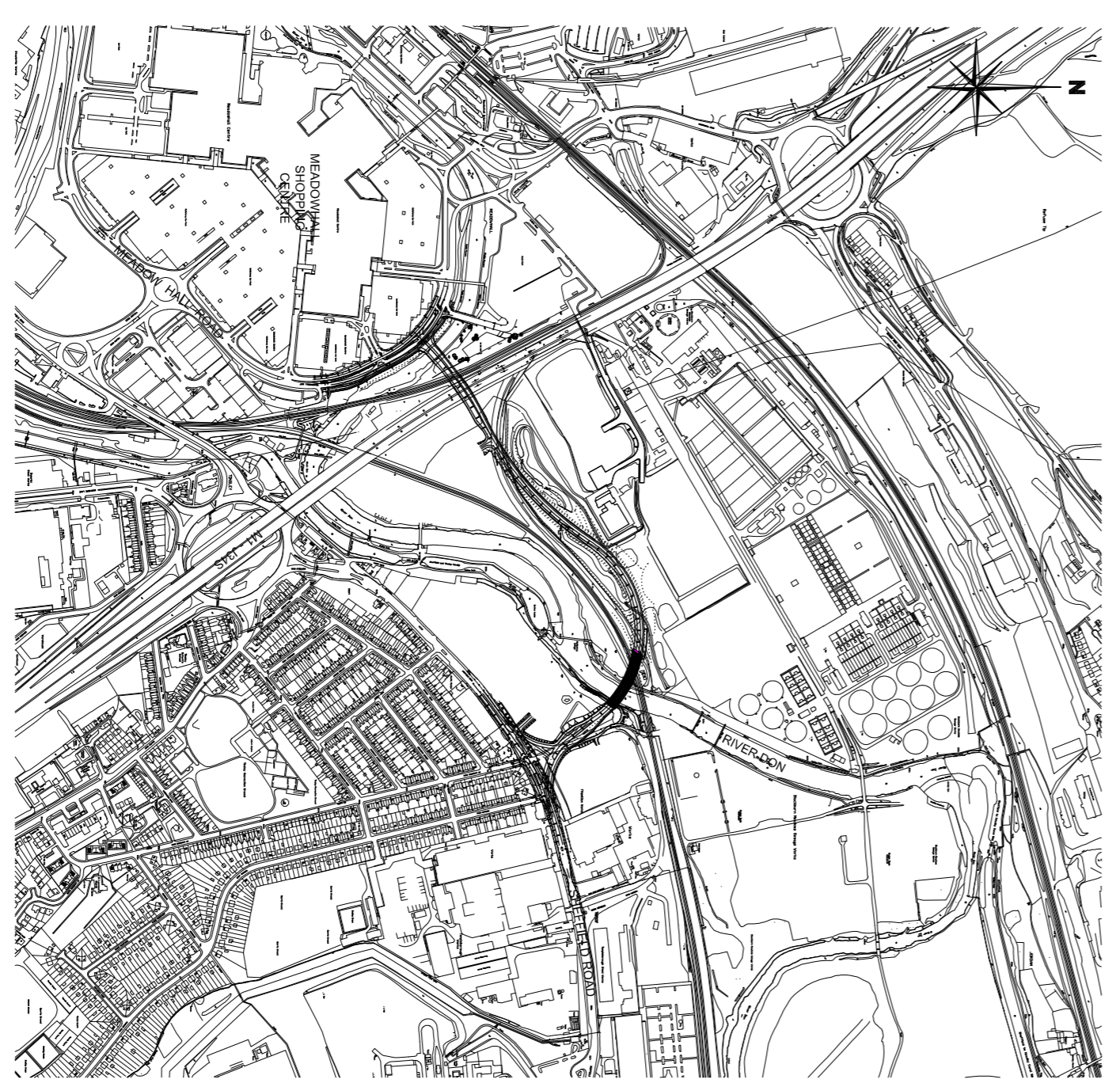
ELEVATION FROM SOUTH
Scale 1:200



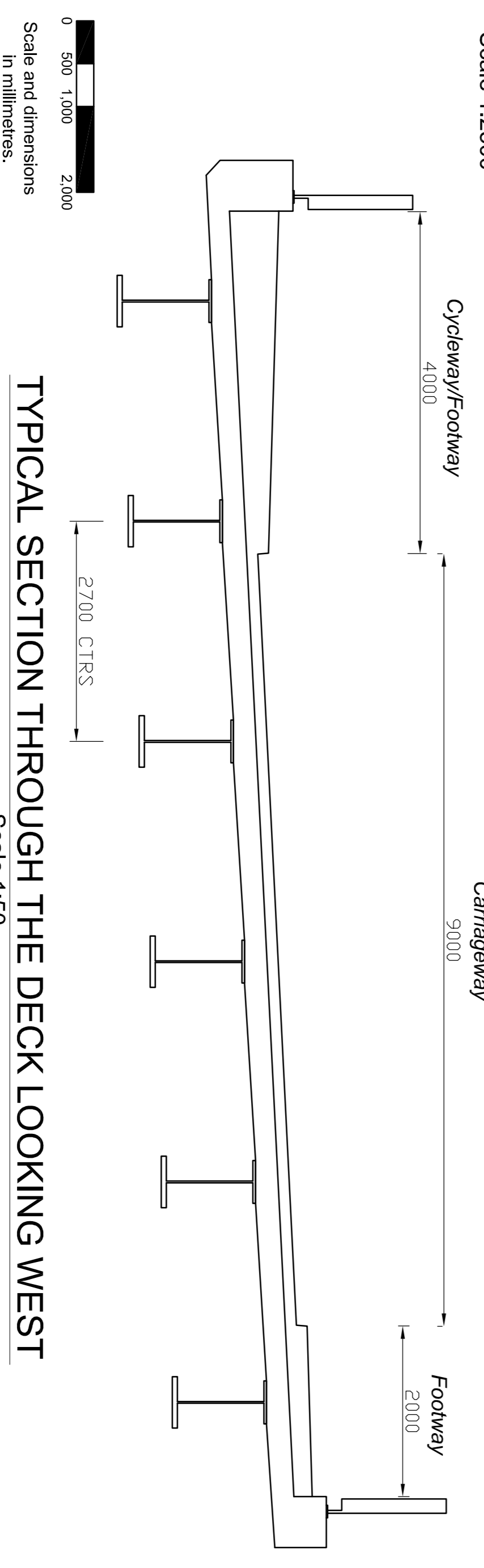
PLAN
Scale 1:500



THE TINSLEY LINK
LOCATION PLAN
Scale 1:2500



BLOCK PLAN
Scale 1:10000



TYPICAL SECTION THROUGH THE DECK LOOKING WEST
Scale 1:150

DRAWING NO.
HD/BN653/P112B

STREET FORCE
DESIGN & BUILD DIVISION

210 CARRBROOK HALL ROAD
SHEFFIELD S9 2BR
Tel: (0114) 273 4330 Fax: 0114 273 4482
1 CHARLTON BRICK CREG WACE
Head of Street Force
A Service User of the Department of Peace, Sheffield City Council

DRAWN
M Sharp
22 December 2011

TRACED

CHECKED

Notes

This map is reproduced from Ordnance Survey material with the permission of Ordnance Survey on behalf of the Controller of Her Majesty's Stationery Office. © Crown Copyright. Unauthorised reproduction infringes Crown copyright and may lead to prosecution or civil proceedings. 10018816.2009

Rev	Date	Content
A	12 July 2012	Bridge designed updated - Central support raised/exposed and elevated roadway on eastern abutment lifted (headroom reduced).
B	9 August 2012	Title block changed: a) Scheme title changed, b) Drawing title changed.

Client
SHEFFIELD CITY COUNCIL

Signed
M Sharp
M Sharp
Scheme
The Sheffield City Council (Bus Rapid Transit Northern Route - Tinsley Link - Frizwilliam Bridge) Scheme 2012

Drawing title
The Schedule To The Scheme

Drawing No.
HD/BN653/P112B

Scale
Varies

Date
9 August 2012

AI

Sheffield City Council
STREET FORCE