

## Appendix E – Figures Showing Impact of Assumptions on Estimate Emissions

Figure E1 2008 Estimated Emissions using National Fleet Assumptions and TRL NO<sub>x</sub> Calculations

Figure E2 2008 Estimated Emissions using Sheffield Bus Fleet Composition, National Car and Freight Fleet Assumptions and TRL NO<sub>x</sub> Calculations

Figure E3 2008 Estimated Emissions using Sheffield Fleet Assumptions and TRL NO<sub>x</sub> Calculations

Figure E4 2008 Estimated Emissions using Sheffield Fleet Assumptions and COPERT NO<sub>x</sub> Calculations

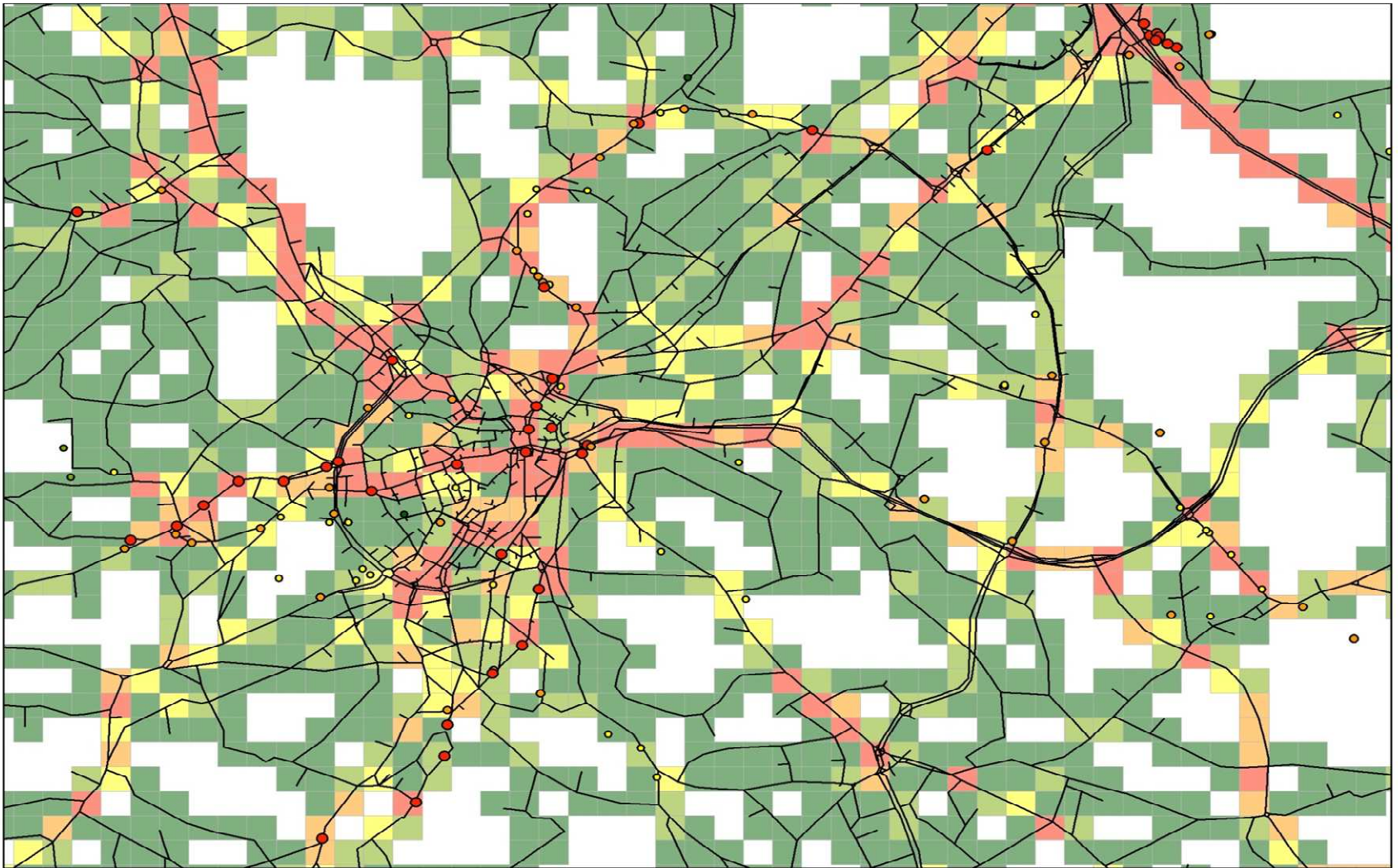
Figure E5 2015 Estimated Emissions using National Fleet Assumptions and TRL NO<sub>x</sub> Calculations

Figure E6 2015 Estimated Emissions using Sheffield Fleet Assumptions and COPERT NO<sub>x</sub> Calculations

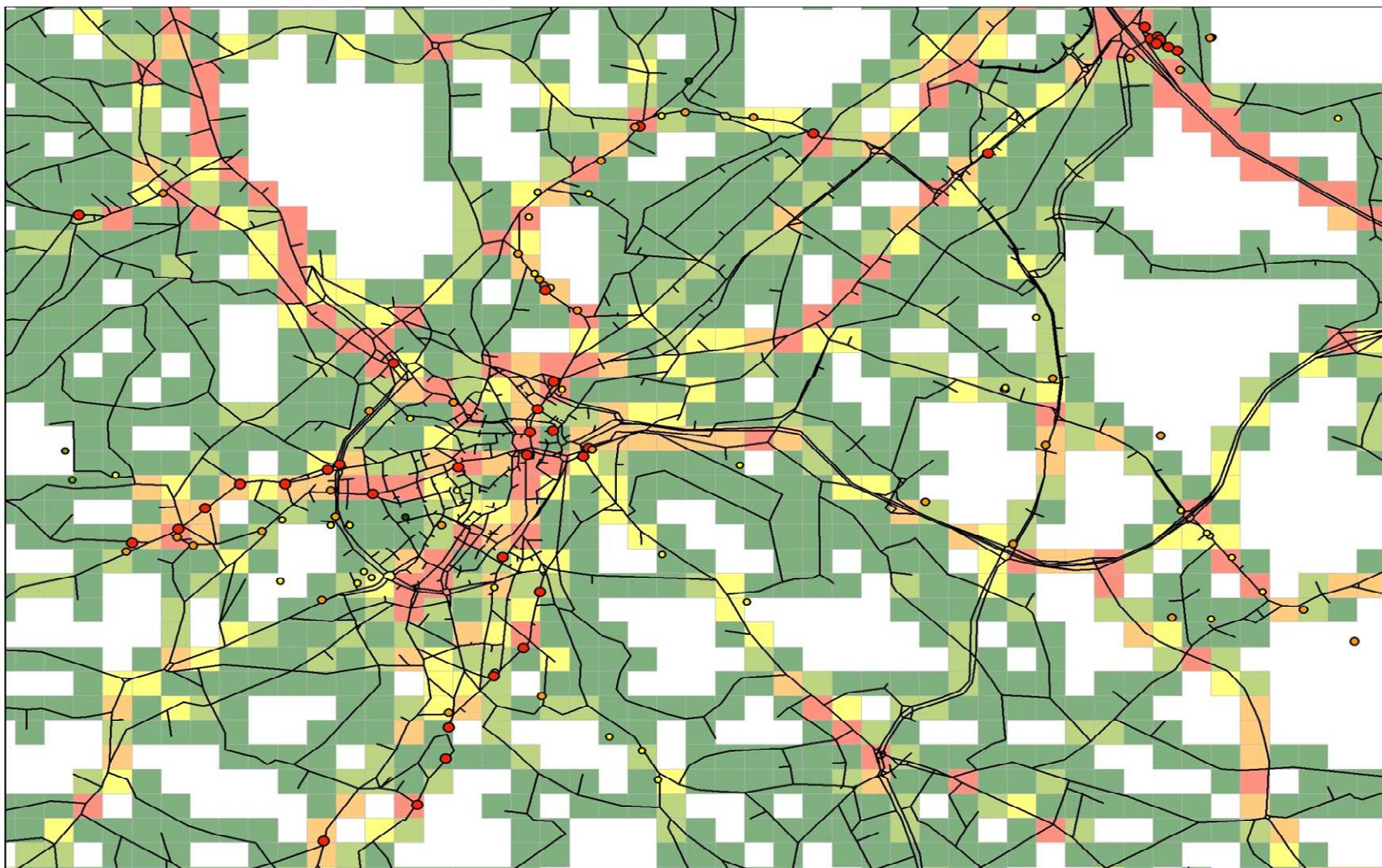
Figure E7 Estimated Emissions using Sheffield Fleet Assumptions, COPERT NO<sub>x</sub> Calculations and Updated Petrol/Diesel Split

### Key to Figures

ObservedData2008	Modelled NO <sub>x</sub>
Annual Mean µg/m <sup>3</sup>	Annual tonnes/km
0 - 9	0 - 1.0
9 - 19	1.0 - 1.5
19 - 29	1.5 - 2.0
29 - 39	2.0 - 2.5
>39	2.5 - 15.6



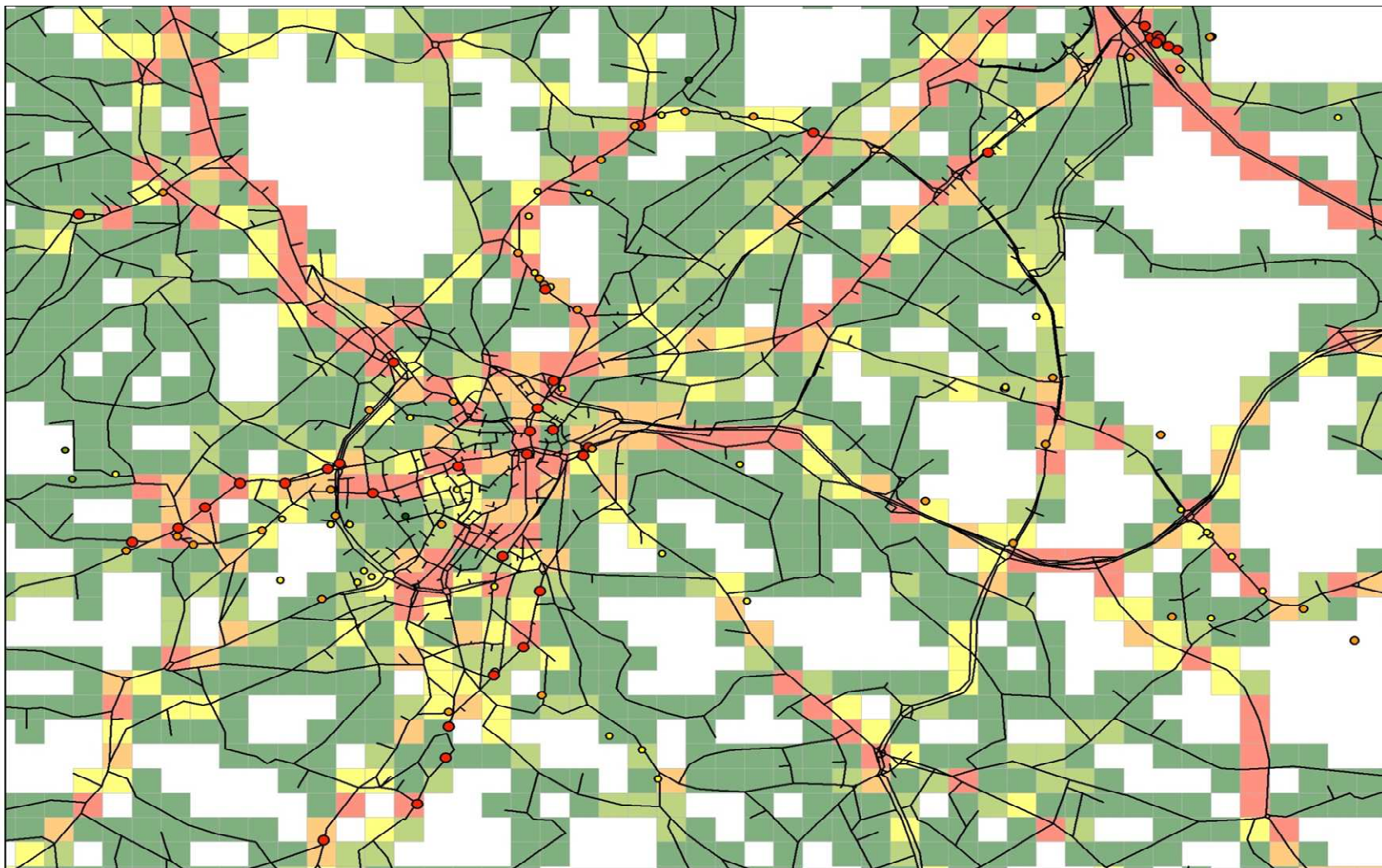
**Figure E1 2008 Estimated Emissions using National Fleet Assumptions and TRL NO<sub>x</sub> Calculations**



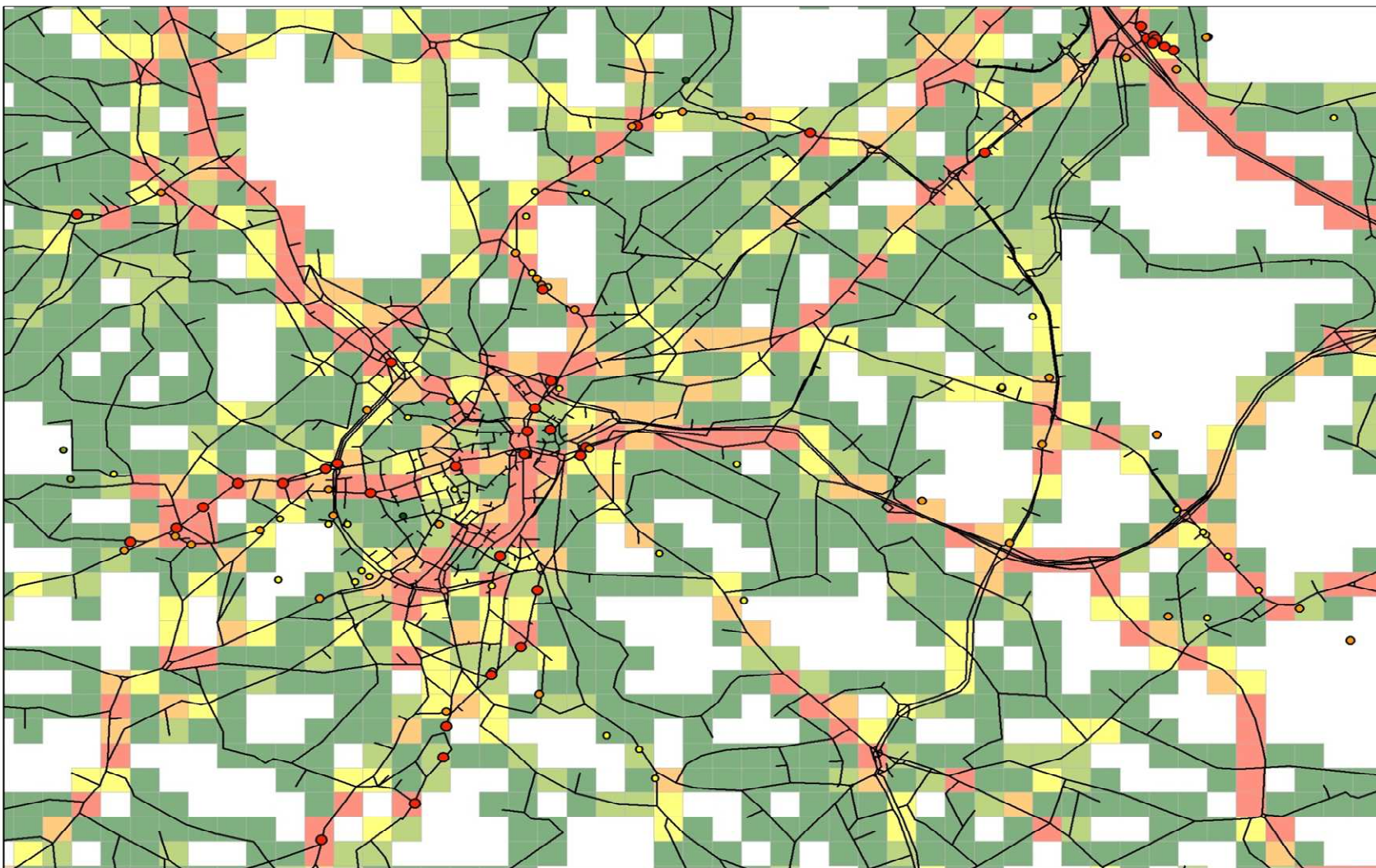
**Figure E2 2008 Estimated Emissions using Sheffield Bus Fleet Composition, National Car and Freight Fleet Assumptions and TRL NO<sub>x</sub> Calculations**

---



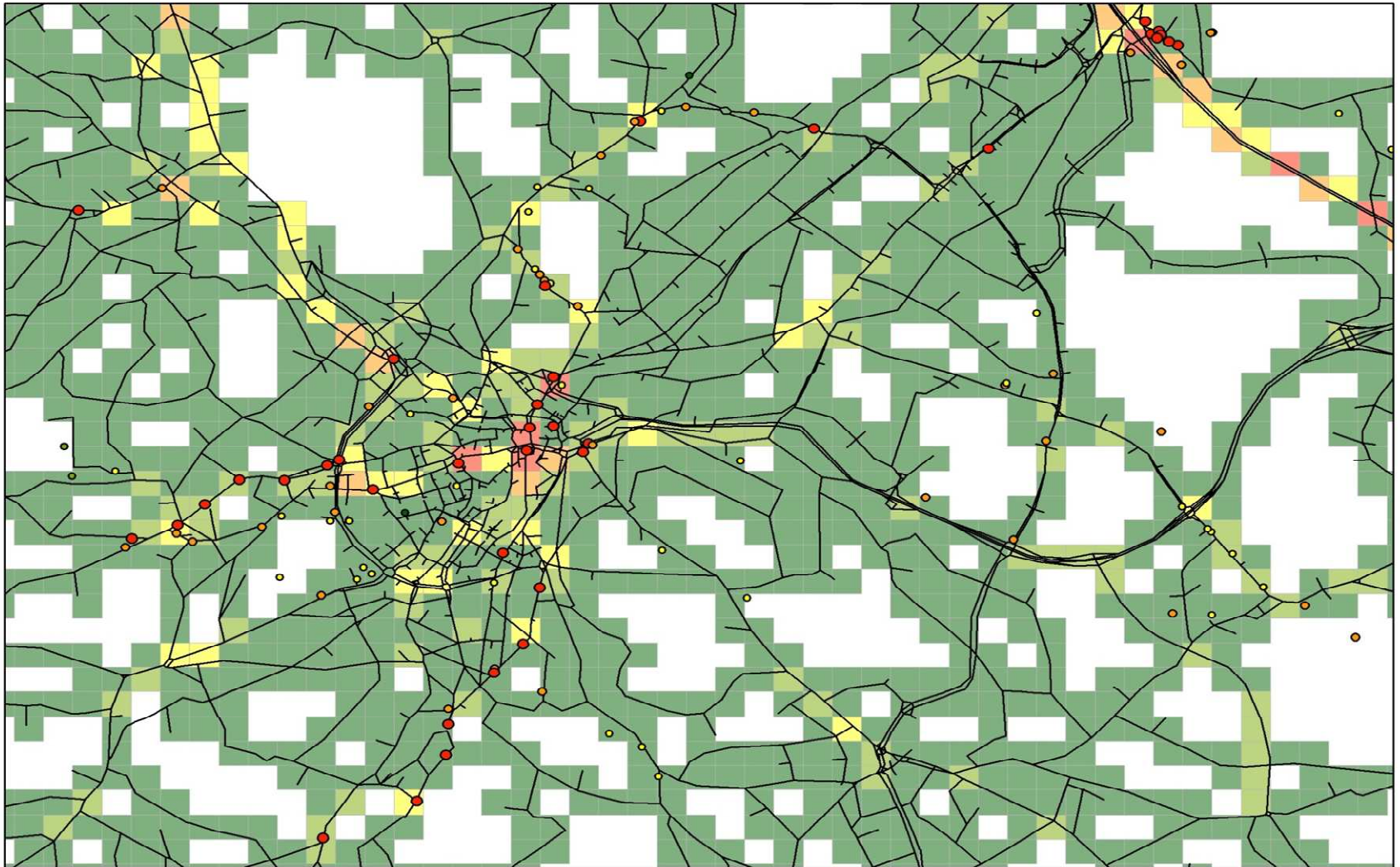


**Figure E3 2008 Estimated Emissions using Sheffield Fleet Assumptions and TRL NO<sub>x</sub> Calculations**

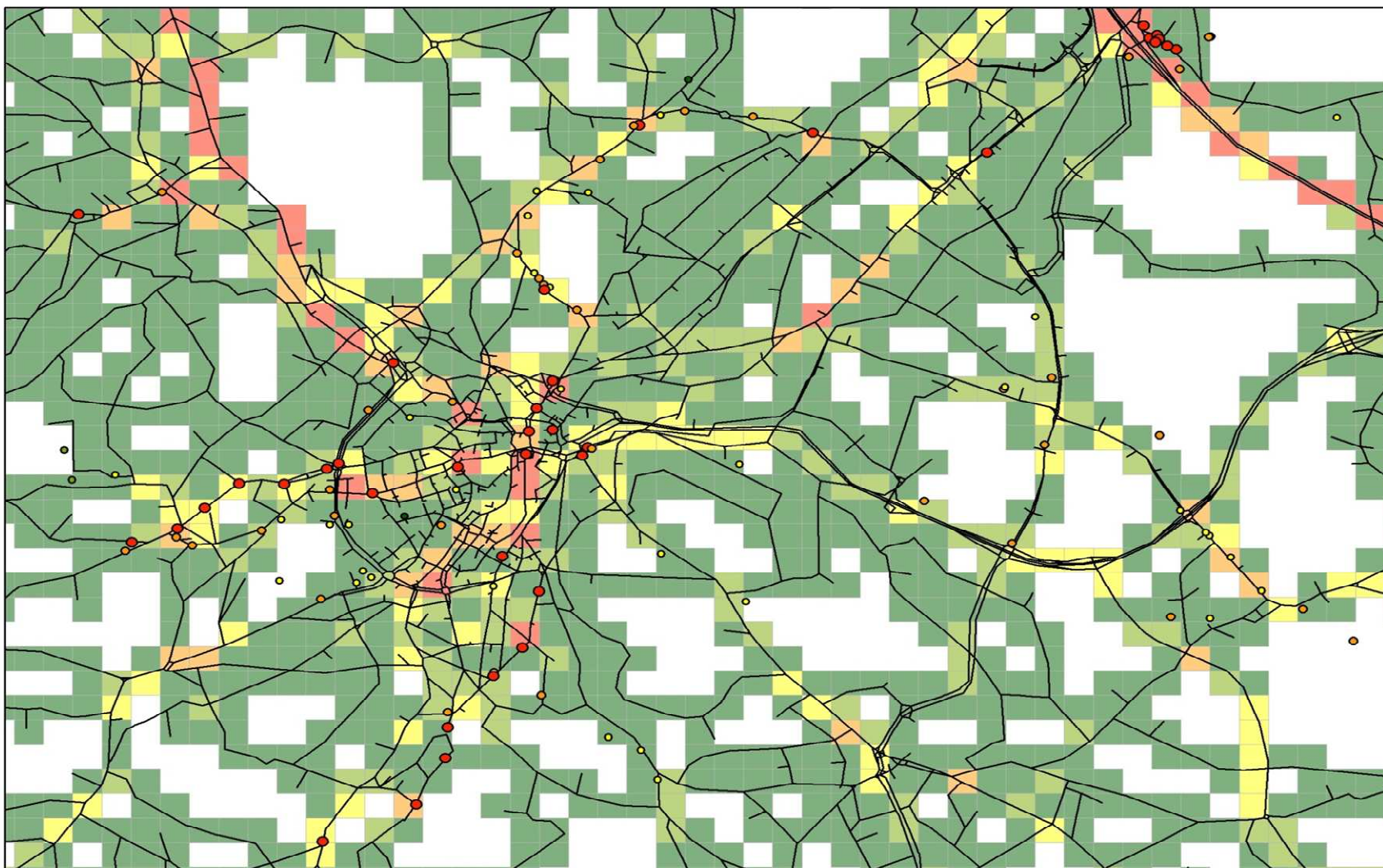


**Figure E4 2008 Estimated Emissions using Sheffield Fleet Assumptions and COPERT NO<sub>x</sub> Calculations**



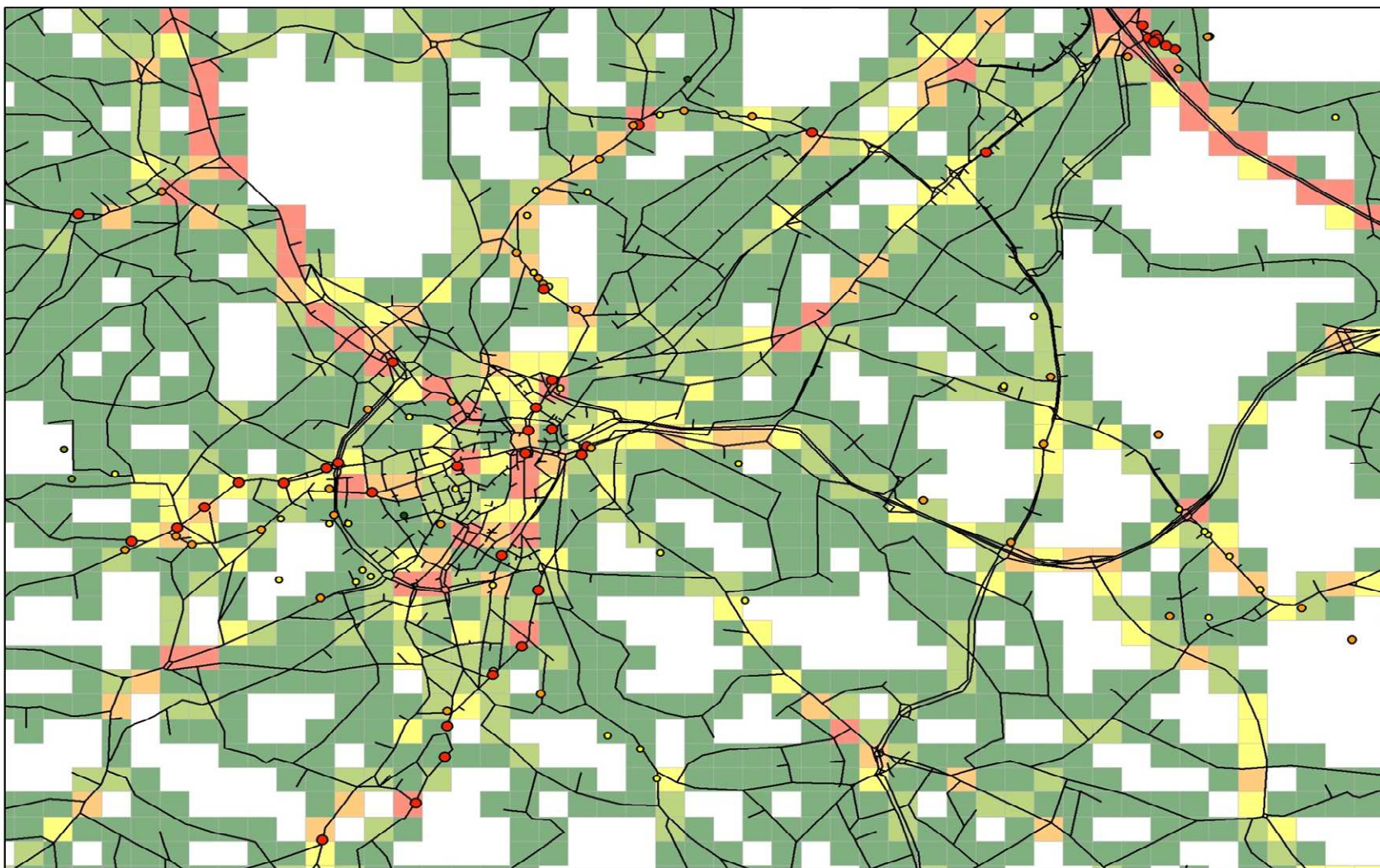


**Figure E5 2015 Estimated Emissions using National Fleet Assumptions and TRL NO<sub>x</sub> Calculations**



**Figure E6 2015 Estimated Emissions using Sheffield Fleet Assumptions and COPERT NO<sub>x</sub> Calculations**





**Figure E7 Estimated Emissions using Sheffield Fleet Assumptions, COPERT NO<sub>x</sub> Calculations and Updated Petrol/Diesel Split**