

Pounds Park Public Art – Metalwork Commission

METALWORK COMMISSION BRIEF

1.0 INTRODUCTION

This brief is for one of two Public Art commissions for Pounds Park. It must be read with *Pounds Park Art Brief – Common* which describes the context and provides information for both commissions and with *Pounds Park Art Brief – Engagement Commission* which is the companion commission.

The commission is for a substantial quantity of artist designed and manufactured metalwork including lighting columns and pergola structures to carry climbing plants. We are looking for the Artist to bring innovative design and craft skills to this work and importantly ensure that it reflects and engages the wide and diverse communities in Sheffield.

Working with and through the artist for the Engagement Commission the Artist will reach out to children across the city to produce designs and artefacts that will become part of the Park. There is also a heritage aspect to the site, which was formerly the main fire station, that we would like to capture and reflect within the metalwork designs where possible and appropriate.

Whilst the focus is metalwork there are elements within this commission that have a more graphic nature as well as hands on workshops. We are looking for the Artist to provide all these skills or offer a team approach. Throughout this document we will refer to this individual or organisation as the Artist

2.0 OUTCOMES

2.1 Lighting Columns and Pergola structures

The lighting columns and pergolas will be a striking visual feature of the Park helping to create the sense of a joyful, unique and distinctive place and adding to the material and craft quality. We are looking for structures that are delightful and playful and yet still have a civic presence as befits the city centre and the wider design of the Park. The lighting columns and pergola are envisaged as variations on a single design theme with the pergola elements possibly being integrated with appropriate columns.

Due to timescales, and as with all the major elements of the Park, the locations of the lighting columns are fixed and the Artist is required to work within these parameters.

Importantly the work will include and integrate designs and artefacts created by children through the Engagement Commission. Whilst we are open to how this is approached the inclusion of artefact is envisaged as cast bronze plaques set within the structures, see 2.4 below.

2.1.1 Lighting columns

Design, including structural design, manufacture and installation of 13 lighting columns. Artist designed lighting columns at fixed locations to carry luminaires as specified by Arup.

see drawings:

General Lighting Arrangement HOG-ARUP-XX-XX-DR-L-21-01
Artist Brief Lighting Design HOG-ARUP-XX-XX-SP-MEP-002

The Artist should provide all the necessary provision for lockable access to wiring and mounting the luminaires. The work does not include the supply or fixing of the luminaires and wiring which will be undertaken by Henry Boot's electrical contractor.

Due to timescales foundations have been specified and will be provided as show in the drawings.

2.1.2 Pergola

The pergola structures supporting climbing plants will help to define and articulate the routes through the park and provide essential shade. It is envisaged that the pergola structures will echo, work with and possibly be integrated with some of the lighting columns.

Design, including structural and foundation design, manufacture and installation of 3 pergola structures each approximately 7 metres long. We are open to variations on this approach and the artist will work with the Council's Landscape Architect to determine the exact location and nature of the structures and the appropriate planting.

see drawing:

General Arrangement Plan HOG-SCE-Z0-XX-DR-L-0001 P05 - the nominal pergola positions are shown as blue dashed lines

2.2 Lighting Frieze and Screens

There are a number of exciting decorative lighting elements throughout the Park giving a unique and distinctive feel in the evenings: a lit pierced screen along the 55m long haha wall which forms the western boundary, lighting cubes that cast patterns on the pavement and stencils for projection lighting which will enliven the play structures in the evening.

The fixtures and supporting elements have been designed by the landscape Architect and Arup and will be made by others. The Artist will supply CAD files for decorative elements to be implemented by others.

2.2.1 Ha-ha Frieze

The western boundary to the park, along Rockingham Street, is formed by a stone ha-ha wall rising from a planting bed. The stone wall is downlit by lighting concealed within a stainless-steel valance with a pierced decorative frieze. The frieze offers an opportunity to introduce a delightful and playful element into this boundary that will be read both during the day and in the dark.

Working with the artists from the Engagement Commission the Artist will design the 55m long frieze and supply digital files for it to be laser cut by others (it is envisaged that the design will have repeating elements).

see drawing:

Artist Brief Lighting Design

HOG-ARUP-XX-XX-SP-MEP-002

2.2.2 Lighting Blocks

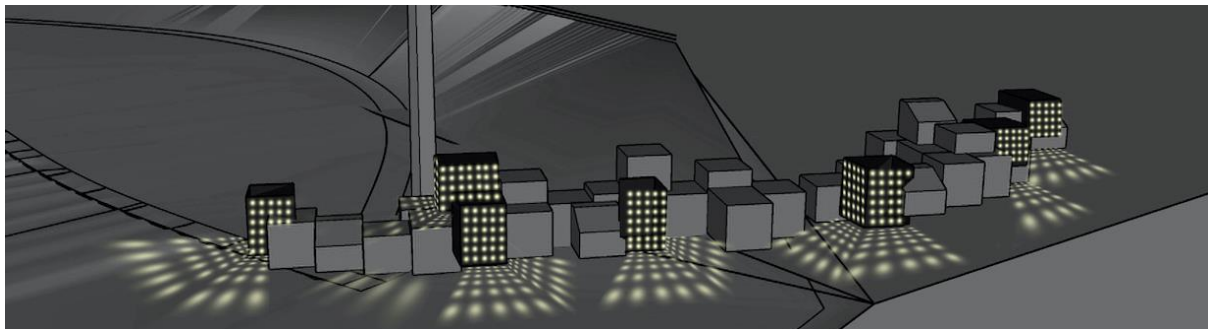
Throughout the Park stone blocks are used as seating elements. At the eastern side, along Carver Street, these blocks are piled up to create a sense of entrance and enable all sorts of informal uses – sitting climbing, performance, etc.. Set amongst these blocks there are 17 lighting blocks with pierced stainless-steel grilles designed to cast patterns onto the paving. Again, these blocks offer the opportunity to introduce a unique and playful element casting patterns that children can interact with.

Working with the artist from the Engagement Commission the Artist will design the patterns for the blocks and supply digital files for them to be laser cut by others.

see drawing:

Artist Brief Lighting Design

HOG-ARUP-XX-XX-SP-MEP-002



2.2.3 Projector light patterns

A number of projector lights will be mounted on the lighting columns to cast patterned light over the climbing boulder and play equipment bringing a sense of delight and enchantment.

Working with the artist from the Engagement Commission the Artist will design the patterns for screens and supply digital files for them to be cut by others.

see drawing:

Artist Brief Lighting Design

HOG-ARUP-XX-XX-SP-MEP-002

2.3 Paving lettering and artwork

Whilst not metalwork this element has been included within this commission as integral to the overall designs and patterns that run through the outcomes above.

The name of the park, Pound's Park, and other artwork as appropriate will be CNC cut into paving at the entrance to the park from Carver Street. This is envisaged as

cut into standard granite paving blocks spread within the 14m that forms the entrance.

Working with the artist from the Engagement Commission and the National Emergency Services Museum the Artist will design the lettering and other artwork and supply digital files for it to be cut by others.

2.4 Design and production of children's artwork

Making the Park feel inviting to and appropriate to children throughout the city is a fundamental part of this commission. Ideas and artworks generated through the Engagement Commission will have a major impact on the appearance of the Park – it is a civic space but should look and feel child friendly, be directly relevant to children today whilst long lasting and pertinent to future generations, and, importantly, reflect the diverse communities in the city.

The Artist for the Metalwork Commission will therefore work with the artist for the Engagement Commission to see designs and artefacts integrated into and incorporated within the artworks listed above.

It is envisaged that a significant number of these artworks will be cast bronze plaques set within the lighting columns and pergola (although we are open to other ways of achieving this). This approach offers an opportunity to have a mobile casting facility and allow the children to experience the magic of transformation by fire.

This is seen as a cooperative design process but the Artist will lead on the nature of this work, how it is incorporated within the structures and the output required from the Engagement Commission.

For the purpose of this brief we have set a clear demarcation in the production of these elements. The artist for the Engagement Commission will produce the originals (clay, card relief etc) to an agreed specification and it is the responsibility of this commission to have them cast or otherwise manufactured and fitted within the elements.

2.5 Mentoring

In tendering these commissions we are hoping to improve the provision of and redress some of the existing imbalances in opportunities for artists from BAME backgrounds. This commission is open to all and it is appropriate to join with less experienced artists and/or offer mentoring opportunities as part of your submission.

2.6 Table showing a summary of Metalwork Commission outcomes

Item	Metalwork Commission	Engagement Commission	Others	Notes
------	----------------------	-----------------------	--------	-------

Lighting Columns				
Artistic Design				to liaise with Arup
Structural Design				to suit pre-designed foundations
Manufacture				
Foundations				
Installation				to liaise with HB
Supply of lighting equipment				
Installation of lighting equipment				
Children's artwork originals				
Production and installation of children's artwork				

Pergola				
Artistic Design				to liaise with Landscape Architect including foundation design
Structural Design				
Manufacture				
Foundations				to liaise with HB
Installation				to liaise with HB
Planting design and provision				to liaise with Landscape Architect
Children's artwork originals				
Production and installation of children's artwork				

Ha Ha Frieze – CAD file to be implemented by others				
Artistic design of valance only				to liaise with Arup
Design				designed, manufactured, and installed through Main Contract
Structural Design				
Manufacture				
Installation				
Supply of lighting equipment				
Installation of lighting equipment				
Children's artwork originals				
Production & installation of children's artwork				as appropriate

Item	Metalwork Commission	Engagement Commission	Others	Notes
------	----------------------	-----------------------	--------	-------

Lighting blocks – CAD file to be implemented by others				
Artistic design of screen only				to liaise with Arup
Design				designed, manufactured, and installed through Main Contract
Structural Design				
Manufacture				
Installation				
Supply of lighting equipment				
Installation of lighting equipment				
Children's artwork originals				
Production and installation of children's artwork				as appropriate

Projection Patterns – CAD file to be implemented by others				
Artistic design				to liaise with Arup
Design				
Children's artwork				

Paving Artwork – CAD file to be implemented by others				
Artistic design				
Design				designed, manufactured, and installed through Main Contract
Structural Design				
Manufacture				
Installation				
Children's artwork				

3.0 REQUIREMENTS

3.1 Design

3.1.1 Suitability of the work for the public realm

All artworks should conform to the regulations and requirements and must be robust, without finger and head traps etc., and meet appropriate Health & Safety guidelines

3.1.2 Structural requirements

The Artist is responsible for the full design of the structures. Where appropriate the structures, foundations and fixings should be designed by a qualified and indemnified structural engineer appointed by the Artist.

3.1.3 Sustainability

Sustainability of the design process, materials and process of manufacture is fundamental to the approach of both Sheffield City Council and Henry Boot

Construction Ltd. The artworks are an opportunity to put forward an innovative and sustainable approach.

3.1.4 Helping to create a useable and safe environment

Sheffield's streets and spaces are carefully designed to open and accessible to all. The work should be enjoyed by and fully accessible to all taking note of the principles of Secure by Design and liaising with the Council's Access Officer.

3.2 Materials and works

3.2.1 Appropriate materials

Much of the metalwork within the Park is stainless steel and this is a potential material for the lighting columns and pergola. However, zinc coated or galvanised mild steel should also be considered especially with a treated and lacquered finish. Painted finished maybe acceptable but proof of durability and longevity of the finish will need to be given.

3.2.2 Robust

All materials and works should be robust, vandal resistant and suitable for the public realm with a long lifetime and easy maintenance. **Anti-graffiti or other appropriate coatings must be applied by the artist.**

3.2.3 Maintenance

The future success of the project relies on the work being robust and easily maintained. Whilst it is expected that the future maintenance will be minimal the Artist will provide appropriate maintenance instructions and documentation.

3.3 Health and Safety

The artist will make provision to ensure that proper Health and Safety (particularly Construction, Design and Management regulations (2015) if they are deemed to apply) and working practices are observed.

3.4 Safeguarding

The Artist will be working with children and vulnerable adults and it is essential that appropriate safeguarding polices and procedures are in place. DBS checks will be required.

3.5 Data Protection

The Artist must comply with General Data Protection Regulations and ensure that appropriate policies and mechanisms are in place to do so.

3.6 Insurance

The required levels of UK insurance for this contract are indicated below.

- Public Liability: £5m
- Products Liability: £2m
- Employer's Liability: £10m

The Artist is asked to confirm that they have, or will ensure that they have, these levels of insurance in place if awarded this contract.

4.0 TIMESCALES

Due to funding and other constraints the project is forced to run to a very tight timescale. These timescales affect not just the art commissions but all the landscaping and building works.

The outputs from the Metalwork Commission will be required in stages to fit with the programme for the general site works.

It is essential that deadlines are met in order to move the project along and interface with the Main Contract and artist for the Engagement Commission.

4.1 Outline Timescales

Application, selection and appointment

w/c 15.11.21	Commission tendered
10.01.22	Deadline for Applications
w/c 24.01.22	Interviews
w/c 31.01.22	Appointment

Stage 1

w/c 31.01.22	Initial meeting with project team
31.01.22 - 18.03.22	Stage 1 Design
21.03.22 - 25.03.22	Acceptance of Stage 1 by Project Team

Stage 2

28.03.22 - 31.07.22	Delivery of programme in stages to be agreed
---------------------	----------------------------------------------

A more detailed programme to fit with the overall construction schedule and regular Project Team Meetings will be developed with the Project Manager.

5.0 BUDGET

5.1 Fixed Budget

The total budget for this Commission is £108,000 (excluding VAT). This fee is to include all payments to the Artist, professional fees and payments to sub-contractors, materials, and expenses.

Please note the Artist must deliver completed works as specified within the project budget and there are no further funds within the project.

5.1.1 Retention

This fee includes a retention to cover any defects in the first six months. This will be released at the end of this period provided that no defects have become apparent.

5.2 Outline Payment Schedule

The commission is split into two stages as outlined in *Pounds Park Art Brief – Common* section 3. The list below shows an indicative payment schedule.

Stage 1 Design and programme development

On acceptance of Commission	£3,000
On completion of Stage 1	£5,000

Stage 2 Delivery of programme

On commencement of delivery	£31,000
Mid-way through delivery	£31,000
On completion of the Commission	£31,000

Retention

Six months after completion	£7,000
-----------------------------	--------

6.0 CONTACT DETAILS

Questions relating to this brief should be addressed to:
Andrew Skelton, Public Art Officer
Sheffield City Council
T: 0114 205 3784 E: andrew.skelton@sheffield.gov.uk