

# Gateway to Sheffield – Levelling Up Fund Bid



## Reminder of the Scope of the Fund

- Impact
  - Economy, wellbeing and place
  - Culture, Regeneration, Transport
  - Visibility
  - Up to £20 million
- 
- Category 2
  - Timetable
  - Package bids
  - 'shovel-ready projects'

- The Castlegate Project
- Harmony Works
- S1 Art Space

Project	LUF	Public Match	Provisional Match	Total
Castle Gate	£15,760,894	£ 2,375,620		<b>£18,136,514</b>
Harmony Works	£ 1,600,000		<i>£ 11,200,000</i>	<b>£12,800,000</b>
S1 ArtSpace	£ 2,639,106		<i>£ 15,960,894</i>	<b>£18,600,000</b>
<b>Total</b>	<b>£20,000,000</b>	<b>£ 2,375,620</b>	<b>£ 27,160,894</b>	<b>£49,536,514</b>

The match on Castlegate is not cash. It's an allocation of land value.





Sheffield Music  
Academy



Inspiring Young Musicians

Sheffield



Music Hub

learn sing play enjoy!

Sheffield Music  
Academy  
Inspiring Young Musicians



Sheffield  
Music Hub  
*learn sing play enjoy!*

**Harmony Works** brings together two music institutions: Sheffield Music Academy and Sheffield Music Hub. The Hub introduces young people to music through community outreach; the Academy identifies and develops promising young talent. Both operate out of 'borrowed' facilities that are not suited to the scale and quality of their work. Harmony Works will acquire Canada House, a Grade II Listed building beside the Castle site. It will provide fit-for-purpose facilities in an accessible location, securing the future of an asset that would otherwise fall into disrepair.





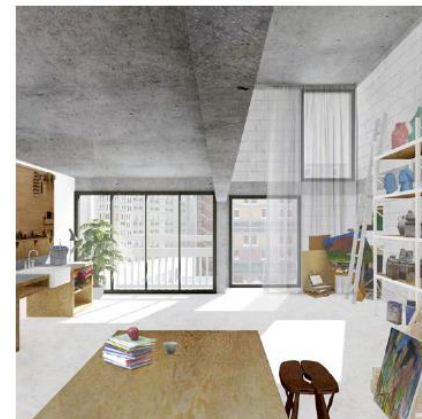
# S1 Artspace



SCULPTURE PARK



GALLERY TWO



ARTIST STUDIO

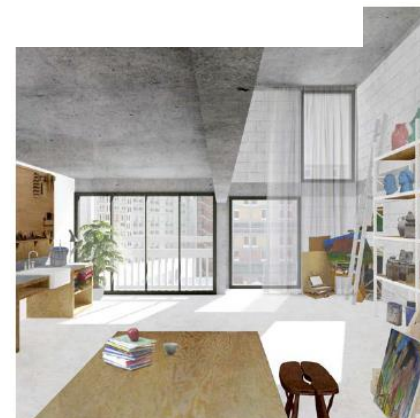


LEARNING STUDIO



GALLERY TWO

**Park Hill Art Space** will deliver an arts, cultural and heritage destination at the Park Hill estate, just a short walk from the Castle. It will be one of the largest contemporary art galleries in the North, complemented by creative workspace and learning facilities, within a six-acre sculpture park connected directly to the Castle site. This will deliver arts infrastructure commensurate with the world class programming for which S1 Artspace is renowned.



ARTIST STUDIO



LEARNING STUDIO

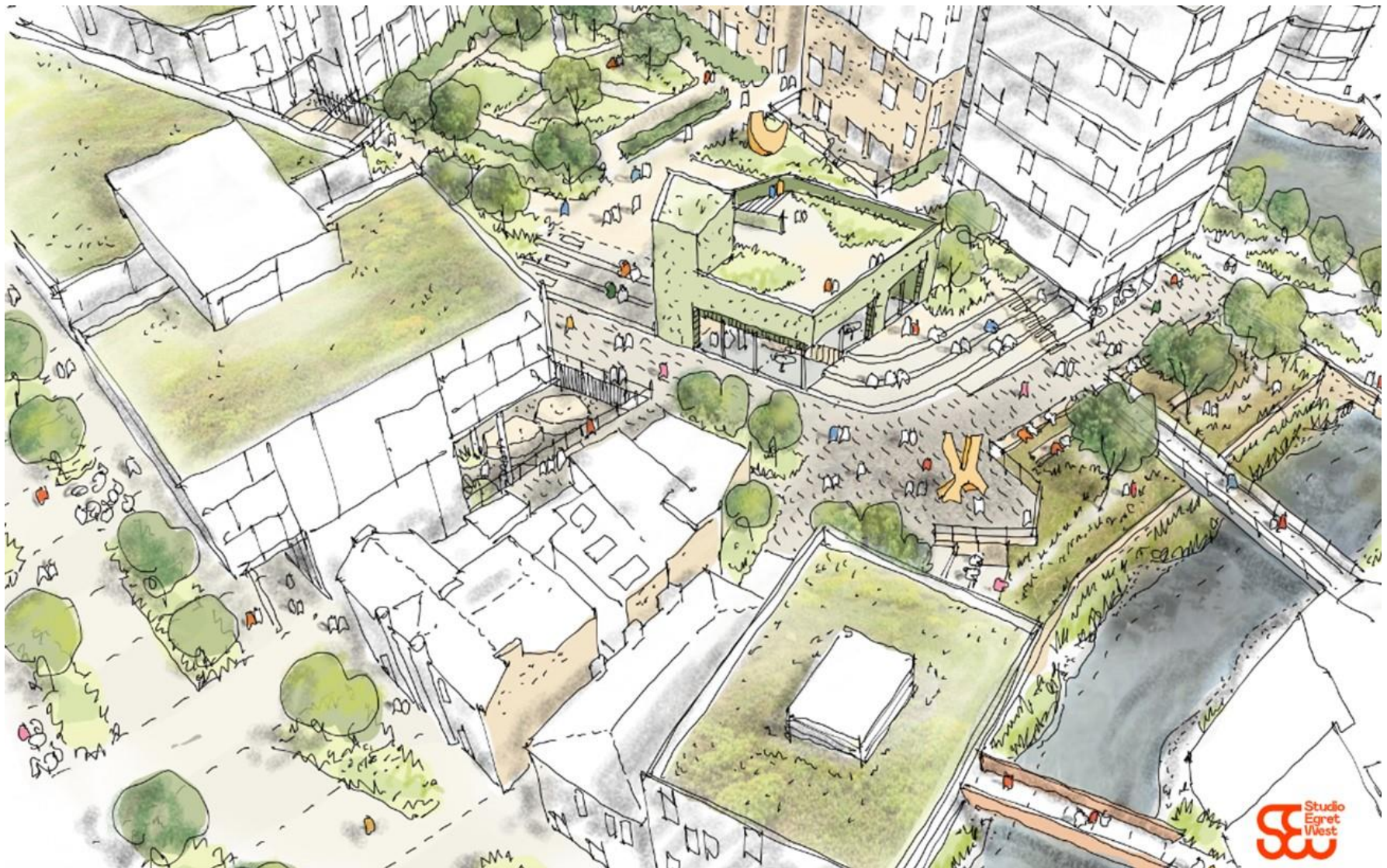
**The Castle** is the centrepiece. It provides essential infrastructure and enabling work to unlock the future development of a large brownfield site and the economic regeneration of Castlegate quarter.

Castlegate is the birthplace of Sheffield. At the confluence of the River Sheaf and the River Don, this was once the heart of the city, and the site of the castle demolished in 1648. Once a thriving commercial area, it has lost its identity and purpose.

The Castle project will re-establish Castlegate as a vital part of the city centre. The River Sheaf will be de-culverted and complemented by new green space and public realm. Land will be readied for future development, with a first anchor already identified: a Sixth Form College and Adult Education Centre. Other plots will be activated by 'meanwhile uses' that encourage healthy lifestyles.



# The Castle





# The Castle





# The Castle





## Potential First Development on the Castlegate Site

- We have started initial discussions with The Sheffield College for new 6<sup>th</sup> Form and Adult Education facilities on the site. If we can make this work, it would bring development forward that is not commercial and reliant on profitability. It would have a positive impact on the area.
- We are looking at creating the conditions for co-production and co-design with the community and involve impacted groups that are currently not represented on the Castlegate Partnership group.
- Some important initial work to be undertaken on the scheduled and listed structures and infrastructure design along with looking at an early project in the de-culverting of the River Sheaf.

- Three-stage process
- Outline Business Case structure
  - Strategic case
  - Value for money
  - Deliverability
  - Risk management
- Match funding
  - Traditional arts and heritage funding
  - Private development (land or surplus)
- Bid deadline was 18 June 2021
- Decision announced October 2021
- Awaiting project inception meeting from the Department for Levelling Up, Housing and Communities
- Harmony Works and S1 Art Space to receive grant funding
- Delivery Timescales to March 2024