



Funded Early  
Learning and  
Wraparound  
Childcare Data  
Spring 2023



Education and Childcare  
Commissioning Service

**Planning Area 2**

**(Hillsborough, Stocksbridge & Upper Don, Stannington Walkley Wards)**

## Contents

### Page 3

- Definitions and Sources

### Page 4

- 2 year take up Spring 2019 to Spring 2023 & LSOAs of concern

### Page 5

- 3 and 4 year take up Spring 2019 to Spring 2023 & LSOAs of concern

### Page 6

- Population by Primary Catchment Area

### Page 7

- Table of Providers

### Page 9

- Wraparound Provision

### Page 10

- 2021 Census Information

### Page 11

- Map 1: Eligible 2 Year Olds not Taking-up FEL

### Page 12

- Map 2: All 3 and 4 Year Olds not Taking-up FEL or Early Education

### Page 13

- Map 3: EFE Take-up

### Page 14

- Map 4: Before School Places

### Page 15

- Map 5: After School Places

## Definitions

Funded Early Learning (FEL) - This is the 15 funded hours for all 3 and 4 year olds and disadvantaged 2 year olds. Children are eligible the term after their 3<sup>rd</sup> birthday, or 2<sup>nd</sup> birthday if they are eligible.

Extended Funded Entitlement (EFE) – This is the extra 15 funded hours working families are entitled to. This will include the new entitlement for 2 year olds from April 2024 and 9 months to 1 year olds from September 2024.

Entitlements Expansion (EE) – This is the new initiative for working families. The expansion is to be introduced in 3 phases;

- Phase 1: April 2024 - 15 hours of childcare over 38 weeks of the year made available to eligible parents of two-year-olds.
- Phase 2: September 2024 - 15 hours of childcare over 38 weeks of the year made available to eligible parents of 9-month to 36-month-olds.
- Phase 3: September 2025 - 30 hours of childcare over 38 weeks of the year made available to eligible parents of 9-month to 36-month-olds

## Data Sources

FEL and EFE - Early Years Census Spring 2023

Population –

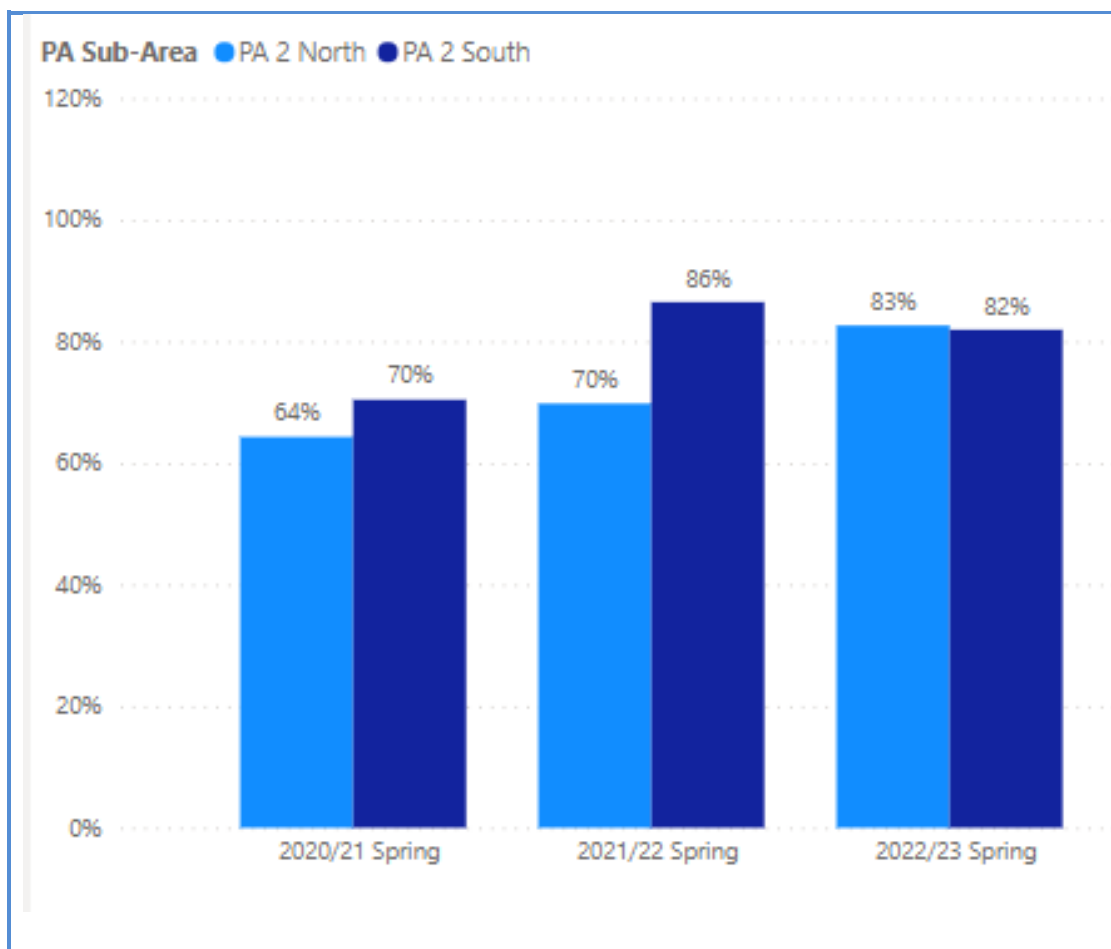
- 3 and 4 Year Old Population - Public Health Register (November 2022)
- 2 Year Old Population – DWP (November 2023)

Quality – Ofsted Reports

Wraparound Data – January School Census 2023. Although several surveys have been carried out to collect more up to date data, there has been a mixed response and only about 50% schools have responded. This information is therefore incomplete and has meant we have used 2023 School Census as it gives us a more complete picture.

Census – 2021 National Census

## Planning Area 2 - FEL Performance Profile for 2 Year Olds – Spring 2023



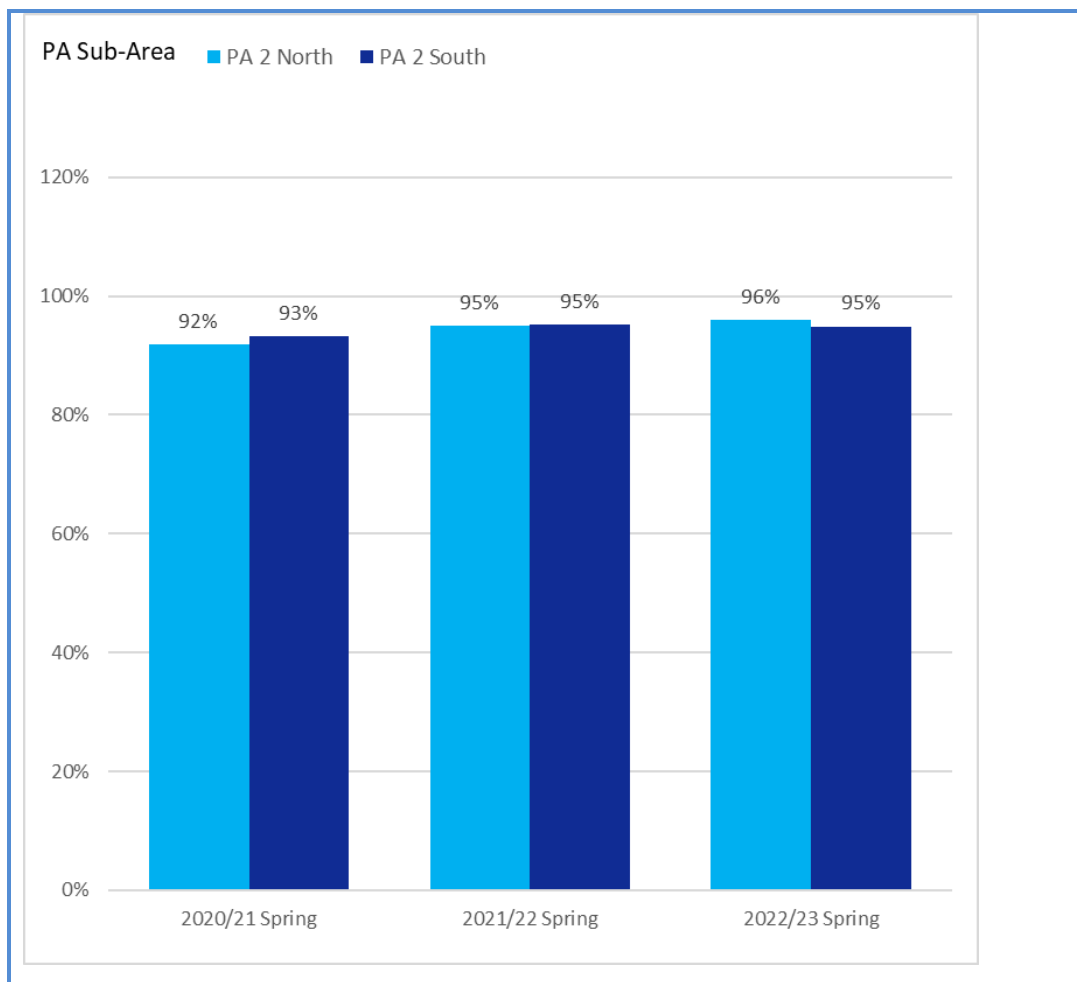
Planning Sub-Area	Eligible Population	Children accessing FEL	Not in FEL
PA 2 North	23	19	4
PA 2 South	94	77	17

Planning Sub-Area	LSOA of Concern	Rank*	Eligible Population	Not in FEL

\*LSOAs are ranked in terms of their deprivation according to IDACI (IMD 2019). LSOAs ranked 1 are within the 10% most deprived LSOAs in the country. Those with a rank of 2 are between the 10% and 20% most deprived. The ranking goes to 10 which indicated the 10% least deprived LSOAs.

Take-up rates for 2 year olds have been higher in Planning Area 2 South than the North in 2021 and 2022, however in 2023 the North's take-up rate was slightly higher. The general trend for both areas is an increasing percentage take-up. It is difficult to know if this trend is set to continue in the next few years. Both areas show that currently about 18% of eligible 2 year olds do not take up a place. There are currently no LSOAs with 5 or more eligible children not claiming FEL. At current take-up rates there are just sufficient places in both the North and South.

## Planning Area 2 - FEL Performance Profile for 3&4 Year Olds – Spring 2023



Planning Sub-Area	*Eligible Population	Children accessing FEL	Not in FEL	No of Children in EFE
PA 2 North	250	240	10	87
PA 2 South	1116	1059	57	439

Planning Sub-Area	LSOA of Concern	Rank*	Eligible Population	Not in FEL
PA 2 South	E01008072	2	40	10
PA 2 South	E01008140	7	39	9
PA 2 South	E01007996	7	41	7
PA 2 North	E01008144	6	36	6
PA 2 South	E01007987	9	30	6
PA 2 South	E01007993	4	31	5

\*LSOAs are ranked in terms of their deprivation according to IDACI (IMD 2019). LSOAs ranked 1 are within the 10% most deprived LSOAs in the country. Those with a rank of 2 are between the 10% and 20% most deprived. The ranking goes to 10 which indicated the 10% least deprived LSOAs.

The take-rates for 3 and 4 year olds are fairly consistent in the 2 Planning Sub-Areas. There are a total of 6 LSOAs that have 5 or more eligible children not claiming FEL. Most of these are in the South, with one LSOA having 10 eligible children not claiming FEL. At current rates of take-up there are not sufficient places in each area. The South in particular has a shortage of places. However, the picture is not as simple as this as there may be spare capacity in neighbouring Planning Areas.

## Planning Area 2 - Population Spring 2023

Ward	Primary Catchment Area	2yr FEL pop	3 & 4yr FEL pop	4yr if Reception Age
PA 2 North	Royd NI & Deepcar St John's CE J	11	90	120
PA 2 North	Stocksbridge NI & J	12	92	130
<b>PSA Sub-Total</b>		<b>23</b>	<b>182</b>	<b>250</b>
PA 2 South	Bradfield Dungworth IJ	1	15	25
PA 2 South	Hillsborough NIJ	11	54	76
PA 2 South	Loxley IJ	2	26	47
PA 2 South	Malin Bridge NIJ	7	99	143
PA 2 South	Marlcliffe IJ	12	98	143
PA 2 South	Oughtibridge IJ	3	57	99
PA 2 South	Rivelin NIJ	4	80	120
PA 2 South	Shooter's Grove NIJ	20	81	124
PA 2 South	Stannington I & Nook Lane J	4	58	89
PA 2 South	Walkley NIJ	21	93	150
PA 2 South	Wharncliffe Side NIJ	4	15	31
PA 2 South	Wisewood IJ	5	49	69
<b>PSA Sub-Total</b>		<b>94</b>	<b>725</b>	<b>1116</b>
<b>Planning Area Total</b>		<b>117</b>	<b>907</b>	<b>1366</b>

## Planning Area 2 – FEL Providers 2023

Planning Sub-Area	Primary Catchment Area	Name of Provider	2 Yr FEL PTE Places	3&3 Yr FEL PTE Places	EFE	Quality
PA 2 North	Royd NI & Deepcar St John's CE J	Royd Nursery Infant School (FEL)	8	54	17	Good
PA 2 North	Stocksbridge NI & J	Early Steps Nursery	6	23	9	Good
PA 2 North	Stocksbridge NI & J	Happy Hands Pre-School and Childcare	2	24	7	Outstanding
PA 2 North	Stocksbridge NI & J	Stocksbridge Nursery Infant School (FEL)		53	25	Good
Provider Total			<b>16</b>	<b>154</b>	<b>58</b>	
Childminder Total			<b>3</b>	<b>1</b>	<b>3</b>	
<b>PSA Sub-Total</b>			<b>19</b>	<b>155</b>	<b>61</b>	

Note:

Places is calculated as the highest take-up of FEL in the previous 3 terms. A PTE place is 15 hours, so 2 children taking up 7.5 hours will equate to 1 PTE place.

Planning Sub-Area	Primary Catchment Area	Name of Provider	2 Yr FEL PTE Places	3&4 Yr FEL PTE Places	EFE	Quality
PA 2 South	Hillsborough NIJ	Hillsborough Primary School (FEL)		32	10	Good
PA 2 South	Hillsborough NIJ	Little Imp Pre-School	19	31	11	Good
PA 2 South	Hillsborough NIJ	Middlewood Nature Nursery	6	24	12	Good
PA 2 South	Hillsborough NIJ	Sheffield Hillsborough College Nursery	5	22	11	Good
PA 2 South	Loxley IJ	Loxley Nursery	2	39	22	Outstanding
PA 2 South	Malin Bridge NIJ	Malin Bridge Primary School (FEL)	3	57	29	Good
PA 2 South	Malin Bridge NIJ	Osborne House Community Nursery		23	11	Good
PA 2 South	Marlcliffe IJ	Corner House Nursery Ltd	2	60	38	Outstanding
PA 2 South	Marlcliffe IJ	Elmore Kindergarten - Middlewood	11	22	10	Good
PA 2 South	Oughtibridge IJ	Coumes Spring Children's Centre	2	33	14	Good
PA 2 South	Oughtibridge IJ	Foresteers Outdoor Preschool	2	22	15	Good
PA 2 South	Rivelin NIJ	Bole Hill Nursery	2	48	36	Inadequate
PA 2 South	Rivelin NIJ	Rivelin Primary School (FEL)		35	10	Good
PA 2 South	Shooter's Grove NIJ	JPAC Ltd at Shooters Grove		0	3	Awaiting First Inspection
PA 2 South	Shooter's Grove NIJ	Shooter's Grove Primary School (FEL)		43	16	Good
PA 2 South	Shooter's Grove NIJ	The Nature Box Forest School		19	13	Outstanding
PA 2 South	Shooter's Grove NIJ	Woodlands Pre-School Nursery	1	33	19	Outstanding
PA 2 South	Stannington I & Nook Lane J	Jack and Jill Pre-School	5	13	6	Good
PA 2 South	Stannington I & Nook Lane J	Stannington Village Pre-School	1	28	7	Good
PA 2 South	Walkley NIJ	St. Mary's CE Primary School (FEL)		16	5	Good
PA 2 South	Walkley NIJ	Walkley Primary School (FEL)		40	0	Good
PA 2 South	Wharncliffe Side NIJ	Wharncliffe Side Primary School (FEL)		19	5	Good
PA 2 South	Wisewood IJ	Wisewood Community Pre-School	4	14	5	Good
Provider Total			<b>65</b>	<b>672</b>	<b>308</b>	
Childminder Total			<b>5</b>	<b>16</b>	<b>20</b>	
<b>PSA Sub-Total</b>			<b>70</b>	<b>688</b>	<b>328</b>	
<b>Planning Area Total</b>			<b>99</b>	<b>842</b>	<b>388</b>	



## Planning Area 2 - Wraparound Provision

PSA	School	Number of Roll R-Y6	Before School Places	After School Places	Onsite/Offsite	Before school Provider	After school Provider
2N	Deepcar St John's CE J	177	0	0	No on-site wraparound		
2N	Royd NI	127	30	30	Full wraparound (8-6)	School	School
2N	St. Ann's RC IJ	101	0	0	No on-site wraparound		
2N	Stocksbridge J	278	0	0	No on-site wraparound		
2N	Stocksbridge NI	198	0	0	No on-site wraparound		
2S	Bradfield Dungworth IJ	133	30	20	Full wraparound (8-6)	School	School in Partnership
2S	Hillsborough NIJ	339	0	0	No on-site wraparound		
2S	Loxley IJ	206	0	0	No on-site wraparound		
2S	Malin Bridge NIJ	538	20	80	Provides some wraparound but not 8am to 6pm	School	School
2S	Marlcliffe IJ	476	70	90	Provides some wraparound but not 8am to 6pm	School	School
2S	Nook Lane J	240	40	40	Provides some wraparound but not 8am to 6pm	School	School
2S	Oughtibridge IJ	414	70	70	Full wraparound (8-6)	School	School
2S	Rivelin NIJ	375	400	400	Full wraparound (8-6)	School	School
2S	Sacred Heart RC IJ	201	30	0	Provides some wraparound but not 8am to 6pm	School	
2S	Shooter's Grove NIJ	356	40	30	Provides some wraparound but not 8am to 6pm	Other (e.g. private)	Other (e.g. private)
2S	St. Mary's CE NIJ	210	32	32	Provides some wraparound but not 8am to 6pm	School	School
2S	Stannington I	174	20	20	Provides some wraparound but not 8am to 6pm	School	School
2S	Walkley NIJ	386	90	40	Provides some wraparound but not 8am to 6pm	School	Other (e.g. private)
2S	Wharcliffe Side NIJ	131	15	0	Provides some wraparound but not 8am to 6pm	School	
2S	Wisewood IJ	165	0	0	No on-site wraparound		
<b>Planning Area Total</b>		<b>5225</b>	<b>887</b>	<b>852</b>			

## Planning Area 2 – Census 2023 Information

Ward	Economically Active Status				Youngest Dependent Child by Economically Active and in Employment		
	Economically active: In employment (including full-time students)	Economically active: Unemployed (including full-time students)	Economically inactive	Does not apply	Youngest dependent child: Aged 0 to 4 years	Youngest dependent child: Aged 5 to 11 years	Youngest dependent child: Aged 12 to 15 years
Hillsborough	10028	461	5438	3224	2701	2432	1112
Stocksbridge & Upper Don	8835	344	6220	3207	2565	2602	1290
Stannington	8622	380	6329	3137	2343	2611	1261
Walkley	9927	956	8560	3258	3113	1975	624

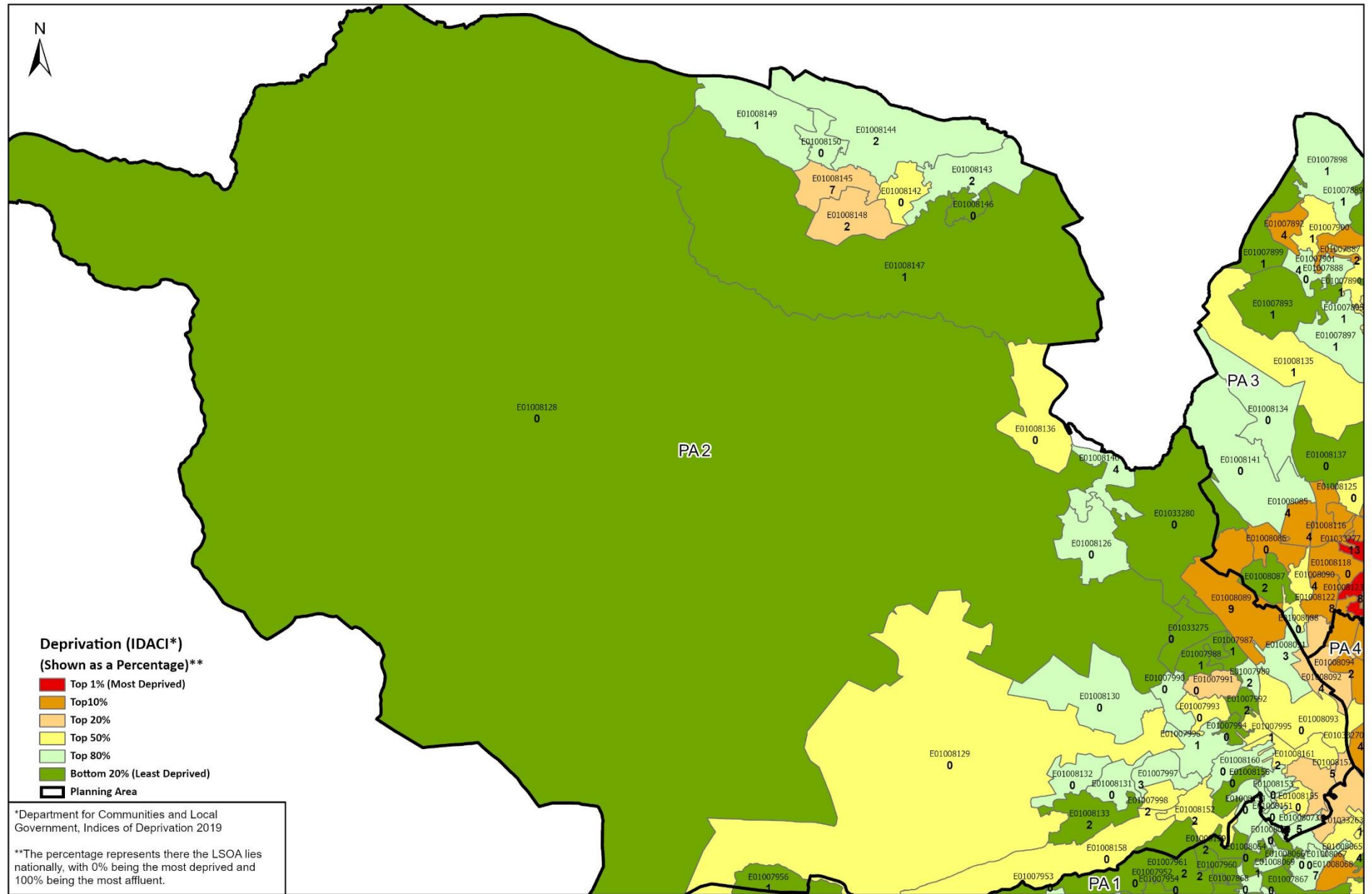
Ward	Hours Worked				Working Arrangements*	
	Full-time: 49 or more hours worked	Full-time: 31 to 48 hours worked	Part-time: 16 to 30 hours worked	Part-time: 15 hours or less worked	Working from Home	Not working from Home
Hillsborough	533	5341	1622	580		
Stocksbridge & Upper Don	614	4151	1383	496	2076	3033
Stannington	661	4138	1330	486	1700	3299
Walkley	616	5379	1569	876	2844	3698

\*Some data has been suppressed due to low numbers.

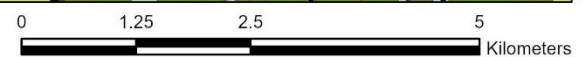
Like the EFE, the new EE is only available to working families. Both parents, or a single parent, have to be working the equivalent of 16hrs on the minimum wage. The data above may give some indication on the level of demand. It is also expected the greatest demand for wraparound care will come from working parents.

# Map 1: Eligible 2 Year Olds not Taking-up FEL

Eligible Two Year Olds Not Taking-up a FEL Place in Planning Area 2 - Spring 2023

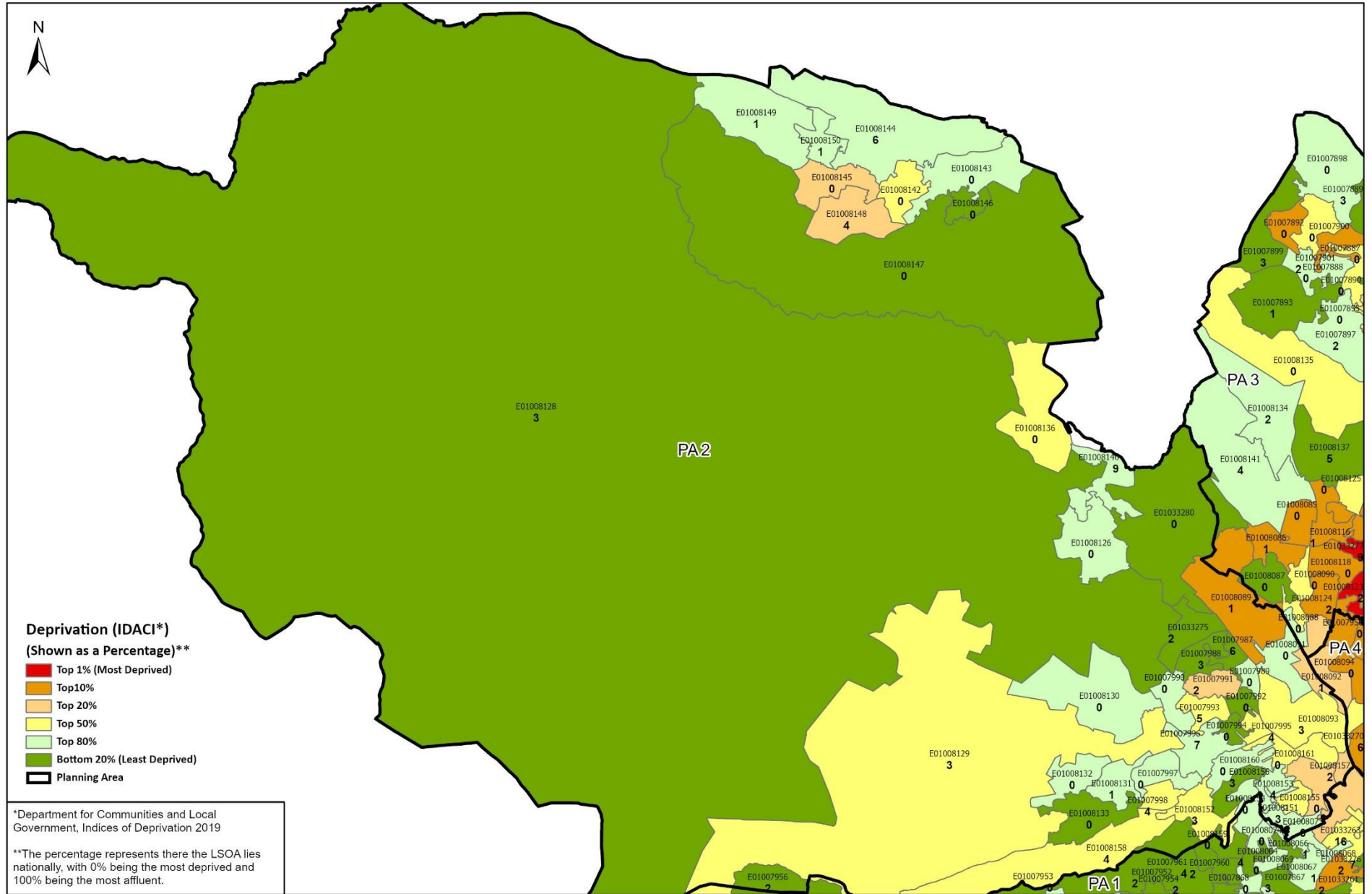


Produced by: Performance and Analysis, People Portfolio  
 © Crown copyright and database right 2024 Ordnance Survey 10018816



# Map 2: All 3 and 4 Year Olds not Taking-up FEL or Early Education

## All Three and Four Year Olds Not Taking-up FEL in Planning Area 2 - Spring 2023

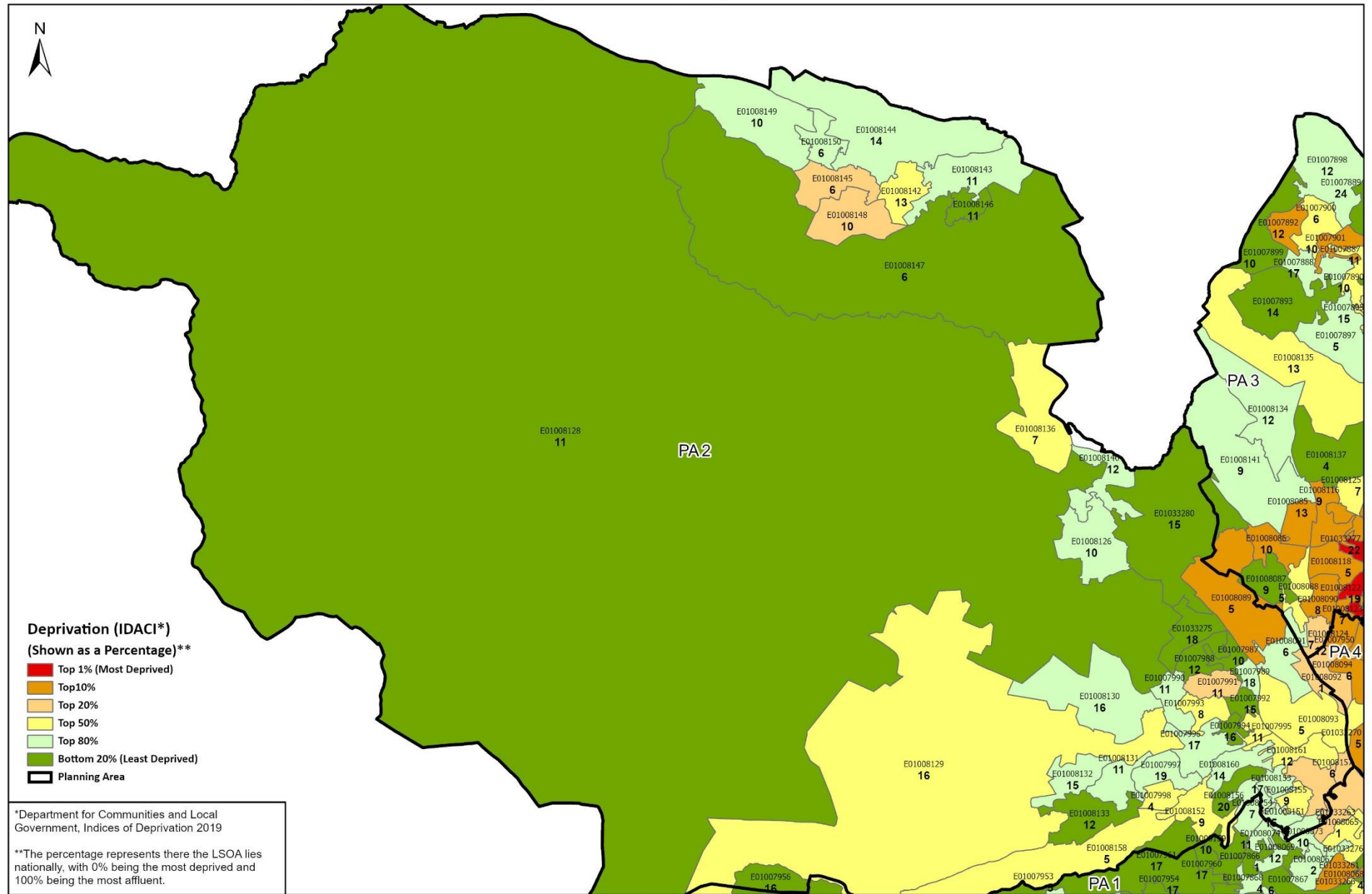


Produced by: Performance and Analysis, People Portfolio  
© Crown copyright and database right 2024 Ordnance Survey 10018816

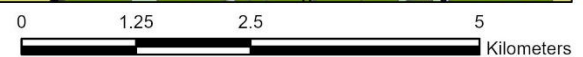


# Map 3: EFE Take-up

Number of Children Taking-up EFE in Planning Area 2 - Spring 2023

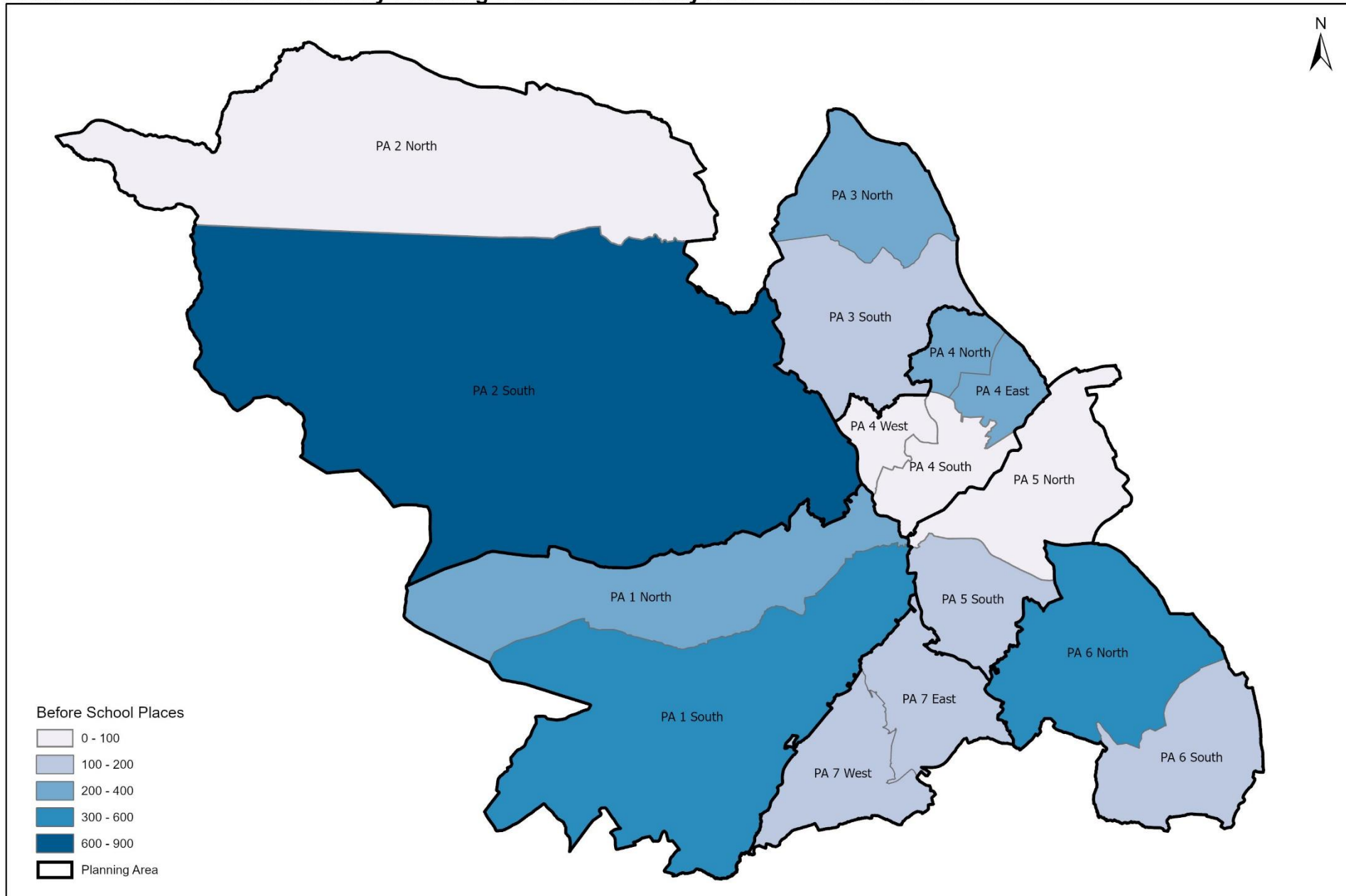


Produced by: Performance and Analysis, People Portfolio  
© Crown copyright and database right 2024 Ordnance Survey 10018816



# Map 4: Before School Places

## Number of Before School Places by Planning Sub-Area - January 2023 School Census

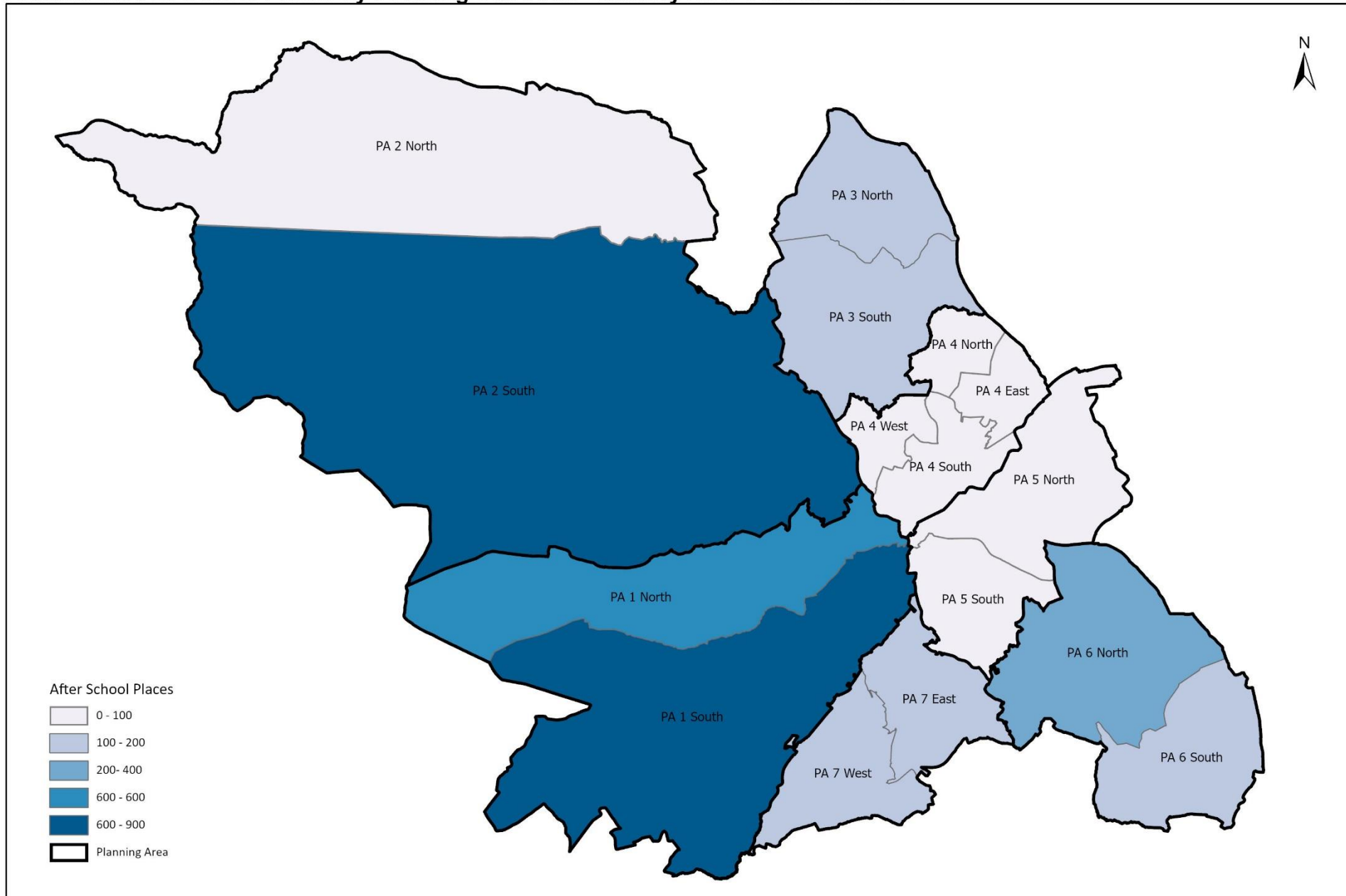


Produced by: Performance and Analysis, People Portfolio  
© Crown copyright and database right 2024 Ordnance Survey 10018816

0 2 4 8  
Kilometers

# Map 5: After School Places

## Number of After School Places by Planning Sub-Area - January 2023 School Census



Produced by: Performance and Analysis, People Portfolio  
 © Crown copyright and database right 2024 Ordnance Survey 10018816

