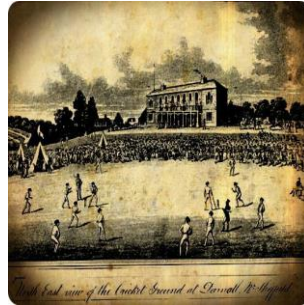
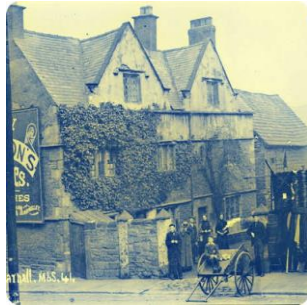


Sources for the History of Darnall



© Sheffield Libraries Archives and Information 2013-2015 (v.1.3)

Front cover illustrations from left to right:

Darnall Old Hall, Main Road (built 1723 by Samuel Staniforth), early 1900s
(*Sheffield Local Studies Library: Picture Sheffield s05630*)

North East view of Darnall Cricket Ground, 1824
(*Sheffield Local Studies Library: Picture Sheffield s03879*)

Miners digging for coal during coal lockout of 1893 behind Handsworth Hill (later renamed Main Road), Darnall, 1893
(*Sheffield Local Studies Library: Picture Sheffield s03762*)

You can download a copy of this *Guide* from www.sheffield.gov.uk/archives

Sources for the History of Darnall

Contents

Books and Pamphlets, etc.	4
Businesses	6
Census returns	6
Churches, chapels and cemeteries	6
Clubs, societies and charities	9
Courts	9
Electoral registers and poll books	9
Hospitals	10
Land, Building, Property and Estate Records	10
Maps	10
Newspapers	11
Photographs and illustrations	11
Poor Law, Civil Parish and Local Government records	11
Schools	12
Other libraries and archives	12
Other titles in this series	14
Sheffield Archives and Local Studies facilities	15
Contact details	16

This guide gives a brief introduction to the variety of sources available for researching the history of Darnall at Sheffield Archives and Local Studies Library.

Darnall lies 3 miles north east of Sheffield City Centre. Darnall was formerly a hamlet in the parish of Attercliffe-Cum-Darnall (it adjoins Attercliffe).

For advice and guidance on any of the information in this *Guide* please contact Sheffield Archives and Local Studies.

There are separate [Community History](#) guides for Attercliffe and Carbrook.

Books and Pamphlets, etc.

Binfield, Clive, *The History of the City of Sheffield 1843 - 1993* (Sheffield Academic Press, 1993) (3 vols)
(*Sheffield Local Studies Library: 942.74 S; Sheffield Archives: SHE/LOCAL; also available at most Sheffield libraries*)

Farnsworth, Keith, *Sheffield's East Enders: life as it was in the Lower Don Valley* (Sheffield City Libraries, 1987)
(*Sheffield Local Studies Library: 942.74 S*)

Harrison, John, *Survey of the Manor of Sheffield with other lands, 1637* [transcribed and edited by James George Ronksley with introduction by R. E. Leader] (Arthur Wightman, 1908)
(*Sheffield Local Studies Library: 333.094274 S; Sheffield Archives: HAR/LOCAL*)

Hewitt, E. C., *Organisational Developments at Darnall from Davy-United via Davy-Loewy to Davy-McKee - a brief history* (1990)
(*Sheffield Local Studies Library: 338.4 SSTQ*)

Hext, Frances Margery, *Staniforthiana: or recollections of the family of Staniforth of Darnall, in Yorkshire* (Lavars, 1863)
(*Sheffield Local Studies Library: 929.2 SQ; Sheffield Archives: SY318*)

Hey, David, *A History of Sheffield* (Carnegie, 2005)
(*Sheffield Local Studies Library: 942.74 S; Sheffield Archives: HEY/LOCAL; also available at most Sheffield libraries*)

Hunter, Joseph, *Hallamshire: the history and topography of the parish of Sheffield: with historical and descriptive notices of the parishes of Ecclesfield, Hansworth [sic], Treeton and Whiston, and of the chapelry of Bradfield* (1819)
(*Sheffield Local Studies Library: 942.74 SSTF; Sheffield Archives: HUN/LOCAL*)

Murfin, John, *The Whiteleys of Darnall* (Sheaf Publishing, 1995)
(*Sheffield Local Studies Library: 823 MURF SST*)

Scrapbook of north-east Sheffield history: Attercliffe, Brightside, Firth Park, Norwood, Pitsmoor, Tinsley, No.2 (Earl Marshall Adult Education Centre. Local History Group, 1984)
(*Sheffield Local Studies Library: 942.74 SQ; also available at Sheffield Archives: EAR/LOCAL*)

Turton, Sue, 'A Changing landscape: Darnall in the nineteenth century', in *Aspects of Sheffield 1*, pp.182-202
(*Sheffield Local Studies Library: 942.74 S*)

Who'd have thought it? The changing face of Sheffield's East End (East End Publishing, 1990)
(*Sheffield Local Studies Library: 942.74 S*)

Wiles, Paul, *Review of issues concerning the Darnall area of the City of Sheffield 1994-1995* (University of Sheffield, c. 1995)
(*Sheffield Local Studies Library: 307.12 Q*)

Wrigley, J. R., *An East End Camera: Picture Memories* (Pickard Communication, 2006)
(*Sheffield Local Studies Library: 942.74 S*)

Wrigley, J. R., *A Darnall camera : picture memories* (Pickard, 2005)
(*Sheffield Local Studies Library: 942.74 S*)

Transactions of the Hunter Archaeological Society
(*Sheffield Local Studies Library: 913.4274 S; Sheffield Archives: HAS*)

Trade Directories give a history of the district, main occupants and businesses, 1774 - 1974, and telephone directories thereafter. A full list of trade directories is available: www.sheffield.gov.uk/libraries/archives-and-local-studies/collections/trade-directories.html. Some directories are available to view online: www.historicaldirectories.org

Bradbury's Enterprise Almanack for Sheffield and District, 1892 - 1905
(*Sheffield Local Studies Library: 032.74 S*)

J. S. C., *Business directory of Sheffield, Rotherham, Masbro' and Attercliffe*, 1862
(*Sheffield Local Studies Library: 914.274 SST*)

The Sheffield and Rotherham directory, including Masbro', the Holmes, Attercliffe, Blackburn, Brightside, Darnall, Grimesthorpe, Heeley, Millhouses, Norton, Shire-Green, Tinsley, Walkley, Wincobank, etc, 1841
(*Sheffield Local Studies Library: 914.274 SST*)

Businesses

A search of the Archives and Local Studies online catalogues and the card indexes may reveal relevant entries.

(Sheffield Archives and Sheffield Local Studies Library)

Here are two examples:

A. R. Wentworth (Sheffield) Limited, Pewter manufacturers, Monarch Works, Darnall, Sheffield, business records, etc., 1930 - 2006

(Sheffield Archives: X28)

Davy-Loewy Ltd., later Davy McKee (originally Davy Brothers), Manufacturers of Forging Presses, Darnall, Sheffield, promotional material of Davy-Loewy and successors, including brochures, copies of notes on company history, photographs and slides, c.1950s - late 1990s

(Sheffield Archives: MD7654)

Census returns

These list every resident by household and include names, relationships, occupations, ages and birth places, every 10 years from 1841 through to 1911, available free at every Sheffield library and at Sheffield Archives via

www.Ancestry.com

Church registers and records, monumental (gravestone) inscriptions and cemeteries

The old chapel-of-ease of the Township of Attercliffe-cum-Darnall, dating from the 17th century, was replaced by a new church, Christ Church, in 1826. The rapid development of Attercliffe and the surrounding industrial area led to the establishment of several new parishes, including Holy Trinity, Darnall. The foundation stone for Holy Trinity Church, Darnall, was laid in April 1839 and the church was initially a chapel-of-ease to Christ Church, Attercliffe, until it became a separate parish in its own right in December 1844 (consecrated in October 1845). Holy Trinity Church was closed in 1975 and demolished. For some time, services were held in the adjoining school, until this was damaged by fire in September 1977. Thereafter, services were held in other churches in the parish until the new ecumenical Church of Christ in Darnall, (which was built on the site of Holy Trinity), was opened in January 1980 (records for the Church of Christ, at the time of writing, are still at the church).

Christ Church, Attercliffe, parish registers and records, 1719 onwards

(Sheffield Archives: PR28)

Holy Trinity Church, Darnall, parish registers and records, 1841 onwards
(*Sheffield Archives: PR68*)

Transcriptions of burials at Holy Trinity Church, Darnall [1846 - 1866]
(*ROM/13*)

St Alban's Church, Attercliffe and Darnall, parish registers and records, 1910 onwards
(*Sheffield Archives: PR36*)

Darnall Parish Church, photocopy of form of service at the unveiling and dedication of the memorial tablet, Sunday, Feb 1921
(*Sheffield Local Studies Library: MP 3546 M PHOTOCOPY*)

Darnall Parish Church, original and copies of parish newsletters and leaflets including 'The Community', the 'New Community' and the 'Leap' [c. 1940s - 1950s]
(*Sheffield Archives: MD8106*)

Records of Rev. Alan Ecclestone (1904 - 1992) [Vicar of Holy Trinity, Darnall between 1942 - 1969], 1929 - 1993
(*Sheffield Archives: MD7481*)

Ecclestone, Alan (Rev.), "The parish meeting at work" (1953) [relating to his work in the parish of Darnall Holy Trinity]
(*Sheffield Local Studies Library: 259 SST*)

Darnall Wesleyan Reform Chapel, Mandeville Street, marriages, 1965 - 1989
(*Sheffield Archives: 1995/104*)

Darnall Wesleyan Chapel, Main Road, marriages, 1927 - 1978, minutes etc., 1866 - 1939, and new church building subscription and account book, Apr 1938 - Jul 1942
(*Sheffield Archives: SY139/27/6, NR270-273 and 2003/34*)

Darnall Old Wesleyan Chapel Centenary Celebrations (Sheffield: Greenup and Thompson, 1922)
(*Sheffield Local Studies Library: Local Pamphlets vol. 124 no. 3 or vol. 98 no. 4 – 042S*)

Darnall Wesleyan Chapel, hymn sheet and programme for visit of Rev. J. Sadler Preece, (Sheffield: Greenup and Thompson, 1922)
(*Sheffield Local Studies Library: MP137 S*)

Darnall Wesleyan Chapel, programme and hymns for centenary effort, 1922
(*Sheffield Local Studies Library: MP262 S*)

Darnall Methodist Centenary Church, Coleford Road [previously Darnall Primitive Methodist Chapel, Industry Road], registers and records, 1902 onwards
(*Sheffield Archives: NR268, SY139/27/5, NR262-269*)

Darnall Methodist Church, deeds, 1810 - 1969
(*Sheffield Archives: NR1314*)

Frederick Street United Methodist Church, Darnall [previously Darnall United Methodist Free Church], registers and records, 1870 onwards
(*Sheffield Archives: NR212-228*)

Salem Independent Chapel, Darnall, baptisms, 1866 - 1937
(*Sheffield Archives: NR2084*)

Darnall Congregational Church, minutes, 1875 - 1969, and accounts, 1920 - 1964
(*Sheffield Archives: NR1098-1114*)

Darnall Congregational Church Sunday School records, 1870 - 1934
(*Sheffield Archives: NR2269*)

Darnall Road Baptist Church, *The Link*, [Jul/Aug, 1971]
(*Sheffield Local Studies Library: MP 1526 M*)

Darnall Cemetery (opened 1859), registers and transcriptions, 1859 - 1995
(*Sheffield Archives: A461-462 and ROM/13*)

Diocese of Sheffield, faculties from 1914 onwards (these detail changes made to Anglican church buildings)
(*Sheffield Archives: DIOC/FAC*)

For further details on Anglican parish registers see
www.sheffield.gov.uk/libraries/archives-and-local-studies/collections/parish-registers.html

For further details on Roman Catholic church registers see
www.sheffield.gov.uk/libraries/archives-and-local-studies/collections/roman-catholic-church-registers.html

For further details on non-conformist chapel registers see
www.sheffield.gov.uk/libraries/archives-and-local-studies/collections/non-conformist-chapel-registers.html

For further details on cemeteries see
www.sheffield.gov.uk/libraries/archives-and-local-studies/collections/cemetery-registers.html

For further details on monumental inscriptions (gravestone transcriptions) see
www.sheffield.gov.uk/libraries/archives-and-local-studies/collections/monumentalinscriptions.html

Clubs, Societies and Charities

A search of the online catalogues and the card indexes at Archives and Local Studies may reveal records from Darnall based clubs, societies and charities.; for instance:

Darnall and District Medical Aid Society, Sheffield, minutes and accounts, 1923 - 1954
(*Sheffield Archives: MD7522*)

Darnall Action Committee/Group, annual reports from 1969, and *Darnall News* from 1973
(*Sheffield Local Studies Library: 309.26 SQ*)

Courts

The Magistrates Court (or Petty Sessions court) records deal mainly with minor offences and licensing the sale and consumption of liquor. Records of the Sheffield Division cover the borough and City of Sheffield and records of Upper Strafforth and Tickhill Division of West Riding of Yorkshire cover areas outside the borough such as Handsworth, Ecclesfield and Bradfield, c. 1870 - 1976.
(*Sheffield Archives: MC*)

There are also records of the Court of Quarter Sessions from 1880.
(*Sheffield Archives: QS*)

Prior to 1880 Darnall came within the jurisdiction of the West Riding Quarter Sessions. Records are held at [West Yorkshire Archives](#)

Electoral Registers and Poll Books

Sometimes known as Burgess Rolls or voters' lists, in essence, electoral rolls are lists of people that are entitled to vote. The Sheffield Local Studies Library has a comprehensive collection from 1841 onwards. More details are available:
www.sheffield.gov.uk/libraries/archives-and-local-studies/collections/electoral-registers.html

Poll books list the votes cast by each voter at elections prior to the introduction of the secret ballot in 1872. More details are available:
www.sheffield.gov.uk/libraries/archives-and-local-studies/collections/poll-books.html

Hospitals

Sheffield Archives has records from over 50 hospitals, including annual reports, photographs and administrative records

For a full list of hospital records see www.sheffield.gov.uk/libraries/archives-and-local-studies/collections/hospital-records.html

Land, Building, Property and Estate Records

Sale particulars (often with plans) date from the late 18th century; for instance, Attercliffe and Darnall, plan and particulars of valuable freehold free beerhouse and excellent building land, 1894 (*Sheffield Local Studies Library*)

In addition some planning applications survive from the late 19th century onwards (*Sheffield Archives: CA206*), etc.; for instance, Staniforth Road / Kirby Road, Darnall - 3 dwelling houses, stabling, etc., 1899 (*Sheffield Archives: CA206/4846*)

There are also deeds to properties and records of land valuations which detail owners and occupiers; for instance, Deeds relating to Darnall Hall and property in Darnall, 1726 - 1794 (*Sheffield Archives: MD2037-2038*)

A notable ancient land-owning family associated with Darnall for centuries were the Staniforths and there are many documents relating to the Staniforth Family of Darnall in Sheffield Archives holdings (e.g. *Sheffield Archives: Wil D and MD5074-5114*)

A search of the Archives and Local Studies online catalogues and the card indexes may reveal relevant entries.

(*Sheffield Archives and Sheffield Local Studies Library*)

Maps

There are large-scale maps of the Sheffield area from 1853 to the present day. Comprehensive coverage of Sheffield and partial coverage of the surrounding areas is available at Sheffield Local Studies Library. Sheffield Archives has incomplete historic coverage of most of South Yorkshire. More details are available here: www.sheffield.gov.uk/libraries/archives-and-local-studies/collections/ordnance-survey-maps.html

Prior to the Ordnance Survey there may be estate and other maps such as tithes www.sheffield.gov.uk/libraries/archives-and-local-studies/collections/tithe-maps.html and enclosures www.sheffield.gov.uk/libraries/archives-and-local-studies/collections/enclosure-awards-and-maps.html

A search of the Archives and Local Studies online catalogues and the card indexes may reveal other maps

(*Sheffield Archives and Sheffield Local Studies Library*)

Newspapers

The two main Sheffield newspapers are the *Sheffield Morning Telegraph* (later *Sheffield Telegraph*) and *The Star*, and these are available on microfilm at Sheffield Local Studies Library.

The *Sheffield Independent*, 1819 - 1900; *Sheffield Daily Telegraph* 1855 - 1903 and *Sheffield Evening Telegraph*, 1887 - 1897 are available online at www.britishnewspaperarchive.co.uk

Photographs and Illustrations

The main series of photographs and illustrations (60,000+) is available online at www.picturesheffield.com. In addition Sheffield Archives has photographs and illustrations within its collections.
(*Sheffield Local Studies Library and Sheffield Archives*)

Poor Law, Civil Parish and Local Government records

Sheffield Town Trustees, records from 1297
(*Sheffield Archives: TT*)

Sheffield Church Burgesses, records from 1304
(*Sheffield Archives: CB*)

Sheffield Borough (later City) Council, records from 1843
(*Sheffield Archives: CA*)

The Sheffield Union (established in 1837) comprised Attercliffe-cum-Darnall, Brightside Bierlow and Sheffield. The workhouse was built in 1881 at Fir Vale, and it later became the site of the Northern General Hospital.

Attercliffe-cum-Darnall, survey for poor rate assessment with accompanying book of plans 1819
(*Sheffield Archives: CA13/1-2, available on Microfilm A176*)

Attercliffe-cum-Darnall, vestry minutes (begins with regulations for the poorhouse), 1819 - 1884
(*Sheffield Archives: CA15/3*)

Attercliffe-cum-Darnall, vestry minutes (including lists of annual charitable dole recipients), 1884 - 1890
(*Sheffield Archives: CA15/1*)

Attercliffe-cum-Darnall, minutes of highway board, 1862 - 1864, and overseers, 1877 - 1901 (*Sheffield Archives: CA15/2*)

Sheffield Poor Law Union (including Attercliffe-cum-Darnall): Guardians' minutes 1890-1930 and letter books 1847-1861; officers' appointments 1876-1913; workhouse punishment book 1903-1926, dietary 1919 (*Sheffield Archives CA 692/1-35, CA24, CA 510*); Copy minutes 1891/2-1929/30; Statement of Accounts, 1884-1930 (with gaps); Guardian handbook and list of committees, 1894-1904, 1906-1929 (*Local Studies Library 352.9 S and 352.9 SQ*)

For more information: www.sheffield.gov.uk/libraries/archives-and-local-studies/collections/poor-law-records and www.sheffield.gov.uk/libraries/archives-and-local-studies/collections/workhouses-and-poor-law-unions.html

Schools

Sheffield Archives has records from over 200 schools, including admission registers and head teachers' log books (diaries). For instance there are log books dating from 1873 and admission registers dating from 1918 for Darnall Church of England School, Station Road (*Sheffield Archives: CA35/748-758*). For a full list of school records see www.sheffield.gov.uk/libraries/archives-and-local-studies/collections/school-records

Minutes of the Sheffield School Board (1870 - 1902) may also be of interest (*Sheffield Archives: SY350; also available at Sheffield Local Studies Library: 379.4274 S*)

Other libraries and archives

In addition to information held at Sheffield Archives and Local Studies other library and archive services will also hold relevant material:

For areas formerly in the West Riding of Yorkshire (such as Darnall) there may be relevant records at the [West Yorkshire Archives Service](#).

Prior to 1914, Darnall came within the jurisdiction of the Diocese of York. There are extensive archives of the Diocese at the [Borthwick Institute for Archives](#) in York.

Wills and probate records relating to those who died in Darnall prior to 1858 are held at the [Borthwick Institute](#) in York. Probate records after 1858 are held at [The National Archives](#) (TNA).

Court records will also be held at the [West Yorkshire Archive Service](#) and at the [National Archives](#).

[The National Archives](#) (TNA) holds records of central government departments and agencies. You can search the [TNA catalogue](#) online.

Information on archaeological sites and ancient monuments is held by the [South Yorkshire Archaeology Service's Sites and Monuments Record](#).

Other titles in this series

Arbourthorne	Darnall	Jordanthorpe	Ranmoor
Attercliffe	Deepcar	Kelham Island	Richmond
Beauchief	Dore	Lodge Moor	Ringinglow
Beighton	Dungworth	Loxley	Sharrow
Bents Green	Ecclesall	Manor	Shirecliffe
Birley	Ecclesfield	Midhopestones	Shiregreen
Bolsterstone	Firshill	Millhouses	Southey
Bradfield	Firth Park	Mosborough	Stannington
Bradway	Frecheville	Nether Edge	Stocksbridge
Brightside	Fulwood	Nether Green	Tinsley
Broomhall	Gleadless	Netherthorpe	Totley
Broomhill	Greenhill	Norton	Uppertorpe
Burngreave	Grenoside	Oughtibridge	Wadsley
Carbrook	Greystones	Owlerton	Walkley
Chapelton and High Green	Hackenthorpe	Park	Whirlow
Crookes	Handsworth	Parson Cross	Wincobank
Crosspool	Heeley	Pitsmoor	Wisewood
Crystal Peaks	Hillsborough	Porter Valley	Woodhouse
			Woodseats

Sheffield Archives and **Sheffield Local Studies Library** services collect and preserve original records and printed material relating to Sheffield and the surrounding area.

The information dates from the 12th century to the present and relates to Sheffield, South Yorkshire and north Derbyshire.

Included are extensive collections of books • pamphlets • photographs • church registers • newspapers • census records • minutes • diaries • films • maps • deeds • records from schools • hospitals • businesses and charities • family estates • personal papers etc

Our facilities include:

Study areas • expert staff on hand to help you make the most of your visit • a library of reference books • photocopying and photography services • free Internet access • microform machines and printers • catalogues and indexes • a range of useful publications for sale • CD - Rom library • on - line image library

<p>Sheffield Local Studies Library 1st floor Central Library Surrey Street Sheffield S1 1XZ</p> <p>Tel: 0114 273 4753 Fax: 0114 273 5009</p> <p>localstudies.library@sheffield.gov.uk</p> <p>www.sheffield.gov.uk/archives</p> <p>(selected) Sheffield Local Studies Library catalogue https://www.sheffield.gov.uk/libraries/archives-and-local-studies/catalogues.html</p>	<p>Sheffield Archives 52 Shoreham Street Sheffield S1 4SP</p> <p>Tel: 0114 203 9395 Fax: 0114 203 9398</p> <p>archives@sheffield.gov.uk</p> <p>www.sheffield.gov.uk/archives</p> <p>(selected) Archives catalogues: https://www.sheffield.gov.uk/libraries/archives-and-local-studies/catalogues.html and http://discovery.nationalarchives.gov.uk/</p>
-------------------------------------------------------------------------------------------------------------------------------------------------------------------------------------------------------------------------------------------------------------------------------------------------------------------------------------------------------------------------------------------------------------------------------------------------------------------------------------------------------------------------------------------------------------------------------------------------------------------------------------------------	-------------------------------------------------------------------------------------------------------------------------------------------------------------------------------------------------------------------------------------------------------------------------------------------------------------------------------------------------------------------------------------------------------------------------------------------------------------------------------------------------------------------------------------------------------------------------------------------------------------------------------------------------------------

For 65,000+ images of Sheffield: www.picturesheffield.com

	www.sheffield.gov.uk/archives
	www.twitter.com/shefflibraries
	http://shefflibraries.blogspot.co.uk
	www.flickr.com/photos/shefflibraries
	www.youtube.com/user/SheffieldArchives1
	www.facebook.com/shefflibraries